

PATTERN FOR FUSELAGE TOP - CUT FROM 1/8" SHT.

1/4" THICK X 1/2" WIDE FOAM RUBBER AROUND EDGES OF CUTOUT. SEAL FOAM RUBBER WITH SECTIONS OF RUBBER FROM TOY BALLOONS

BORDER CUTOUT WITH 1/4" SQ. CN INSIDE

USE MARKS TO POSITION BULKHEADS

CUTOUT FOR ACCESS TO RADIO

ROUND TOP CORNERS EXCEPT UNDER WING

NI & NR ARE 1/8" PLY.

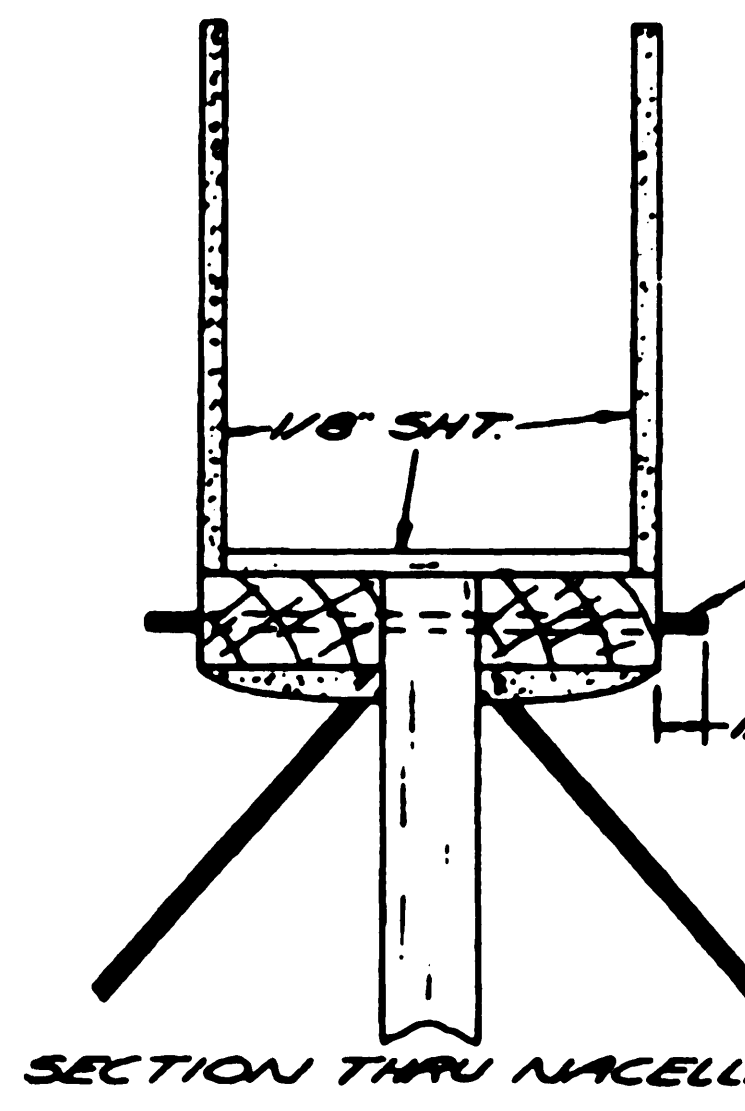
ALL FUSELAGE BULKHEADS ARE 1/8" SHT. Balsa

TOP WING HAS 1° POS. INCIDENCE

SUPER TIGRE RV. 40 USED ON ORIGINAL

TANK COMPARTMENT

NACELLE IS LEFT OPEN ON TOP FOR ACCESS TO TANK



SECTION THRU NACELLE

LEAVE BOTTOM CORNERS SHARP

4-40 THREADED ROD EPOXYED INTO NACELLE

WIRE INSERTS EPOXYED IN PLACE TO KEEP MONO-FILAMENT LINE FROM SAWING THRU Balsa

- HULL CONSTRUCTION SEQUENCE  
NOTE: HULL IS BUILT UPSIDE-DOWN
- 1) CUT OUT FUSELAGE TOP AND MARK G.
  - 2) GLUE BULKHEADS IN PLACE.
  - 3) ADD KEEL & 1/4" SQ. BOTTOM LONGERONS.
  - 4) GLUE 3/8" SQ. TOP LONGERONS IN PLACE AND SAND ANGLE, USING BOTTOM LONGERONS AS A GUIDE.
  - 5) GLUE SIDES IN PLACE AND TRIM TOP EDGES OF SIDES FLUSH WITH FUSELAGE TOP. ADD 3/16" SQ. UPRIGHTS & CROSS PIECES TO ENTIRE LENGTH OF HULL. (TWO TO EACH BAY BETWEEN BULKHEADS).
  - 6) GLUE 1/8" CROSS-GRAIN BOTTOM SHEETING IN PLACE.

CUT FUSELAGE SIDES 1/8" HIGHER THAN SHOWN (AS INDICATED BY PHANTOM LINE), THEN TRIM AS IN STEP #5

1 1/4" FOAM BALL PILOTS - 2 REQ'D  
Balsa BLOCK HEADREST

Balsa NOSE BLOCK

3/8" SQ. TOP LONGERONS

1/4" DOWELS

RADIO COMPARTMENT - SEAL AT BOTH ENDS

1/8" SHT. SIDES

3/16" SQ. UPRIGHTS & CROSS PIECES - 2 TO EACH BAY BETWEEN BULKHEADS

1/4" SQ. BOTTOM LONGERONS

1/4" SHT. KEEL

1/4" SQ. BOTTOM LONGERONS

1/8" SHT. BOTTOM - CROSS-GRAIN

3/16" SHT. NYRONS

1/32" SHT. - BOTH SIDES

TRIANGULAR GUSSETS

MONOFILAMENT BRACE WIRES

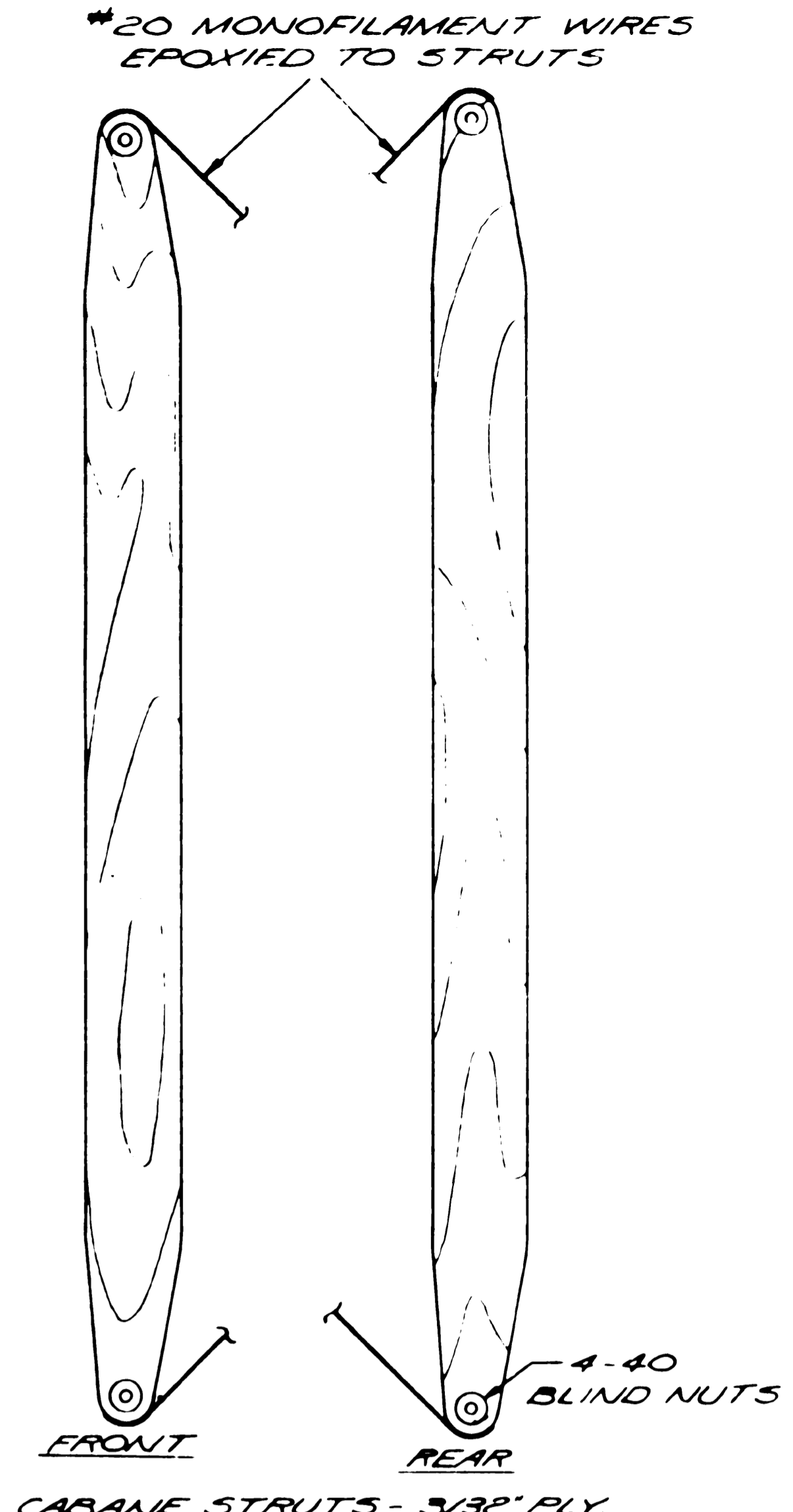
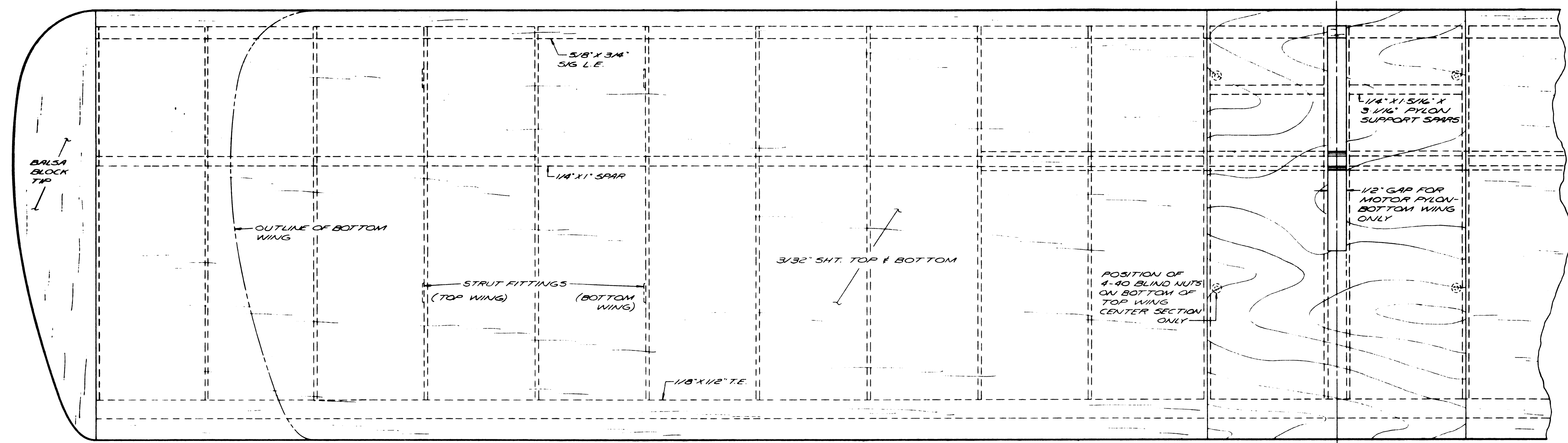
3/8" TRIANGULAR GUSSET

SLOT RUDDER, FIN & EPOXY WATER RUDDER IN PLACE

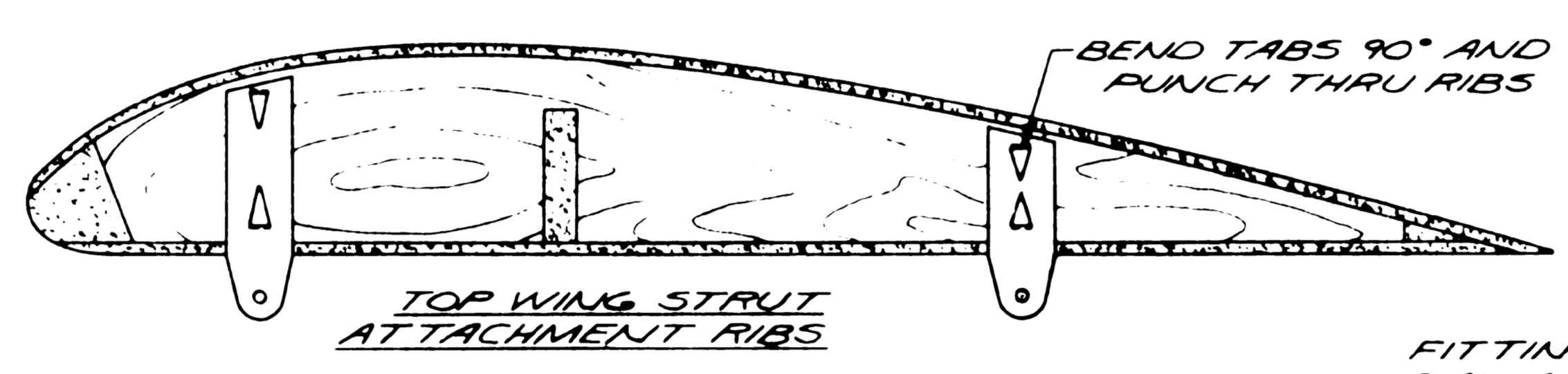
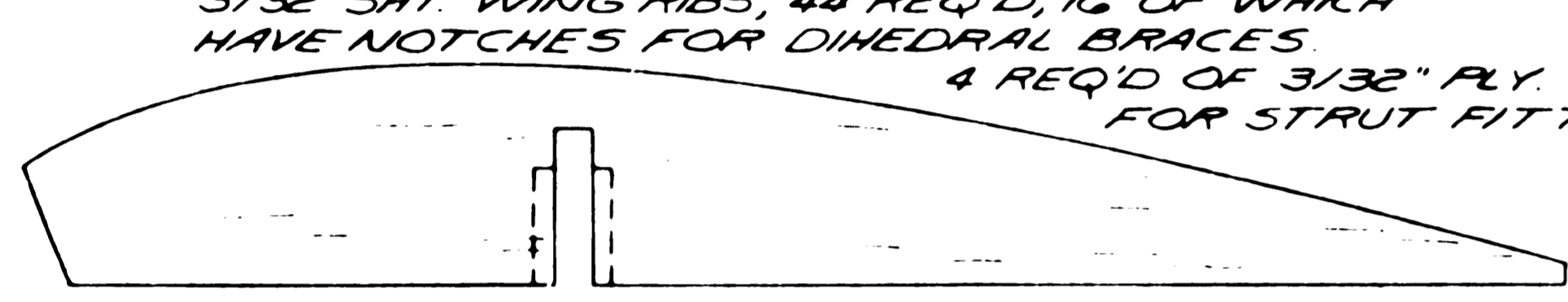
VERTICAL FIN EXTENDS FROM HERE TO HERE AND IS GLUED TO KEEL

# 1920's Navy Flying Boat

DESIGNED & DRAWN BY GEORGE CLAPP  
TRACED FOR M.B. BY PHIL BERNHARDT  
SPAN - (TOP) 72" - (BOTTOM) 60" AREA - 1500 SQ. IN.  
LENGTH - 54 1/4" POWER - 40-60

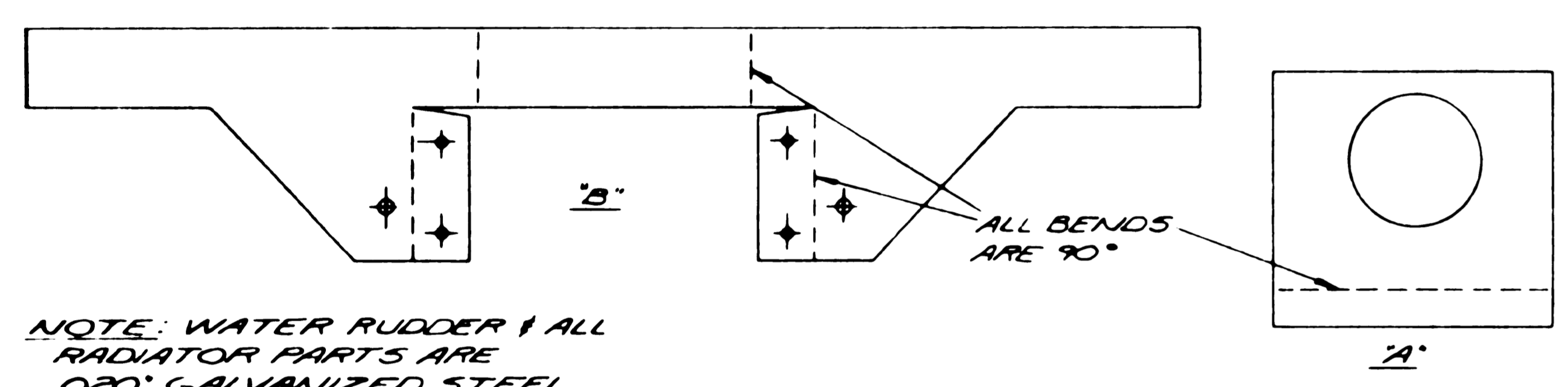


3/32" SHT. WING RIBS, 44 REQ'D, 16 OF WHICH HAVE NOTCHES FOR DIHEDRAL BRACES. 4 REQ'D OF 3/32" PLY FOR STRUT FITTINGS.

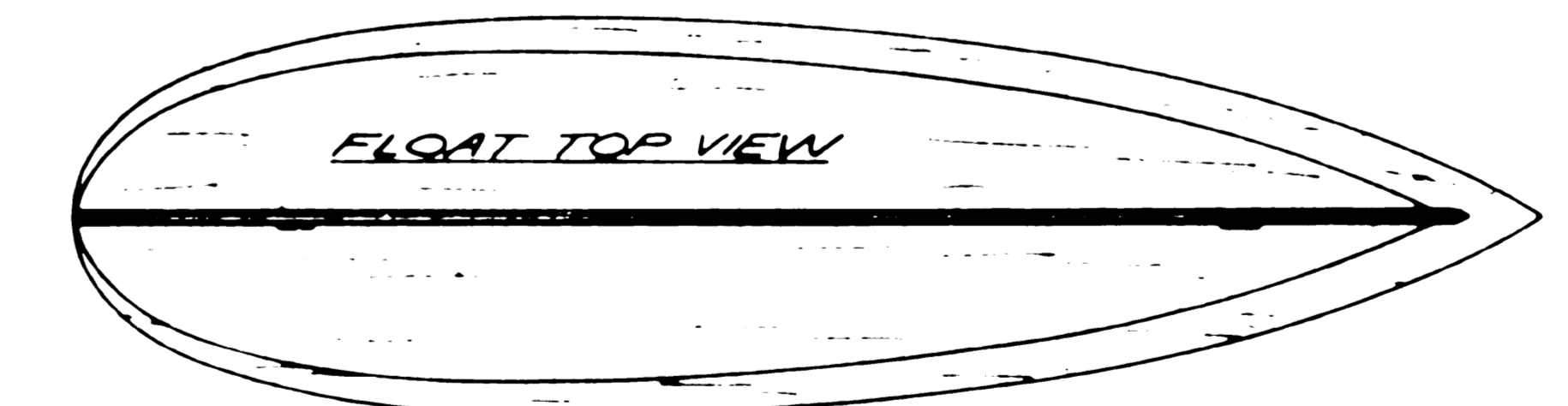
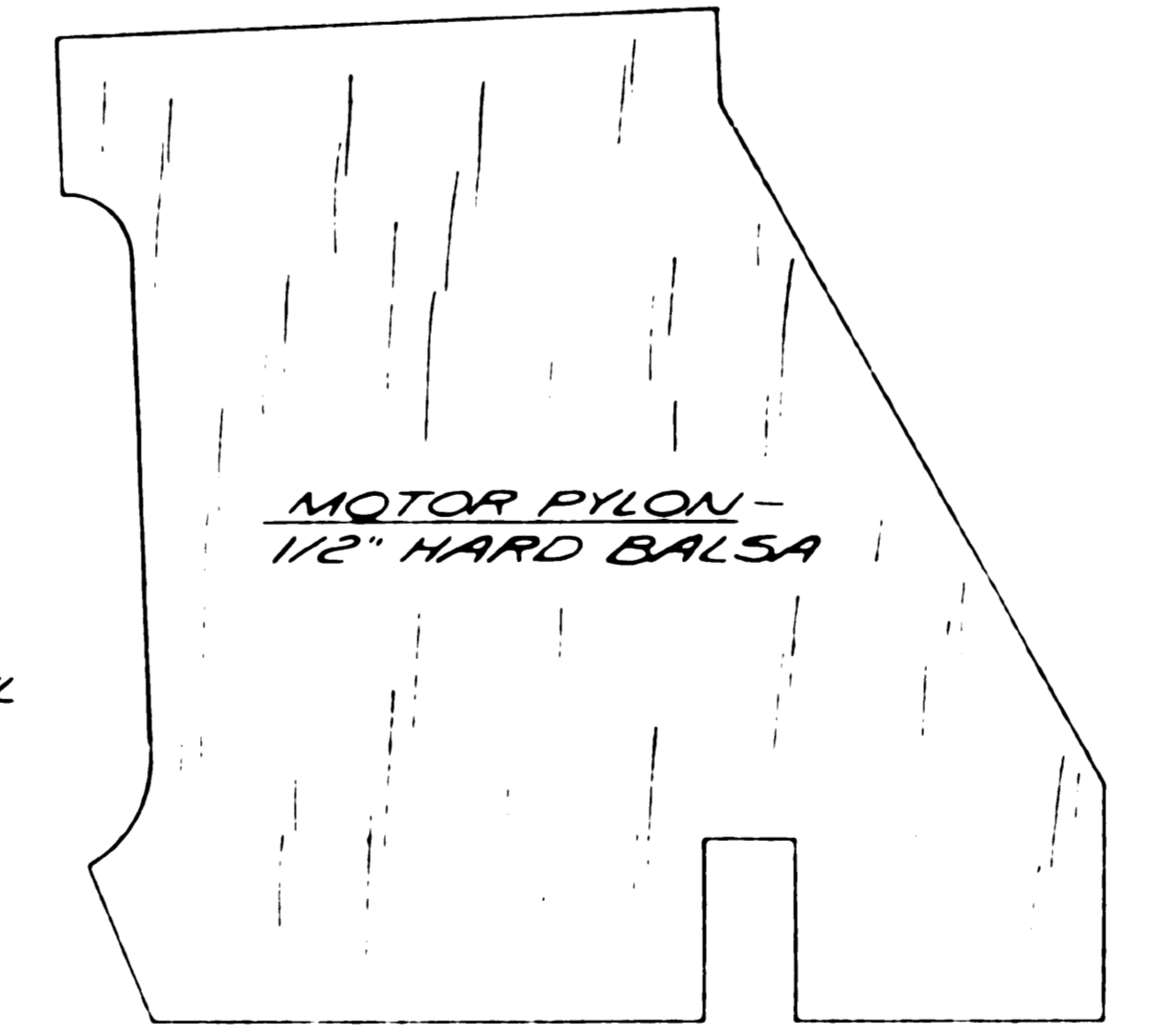
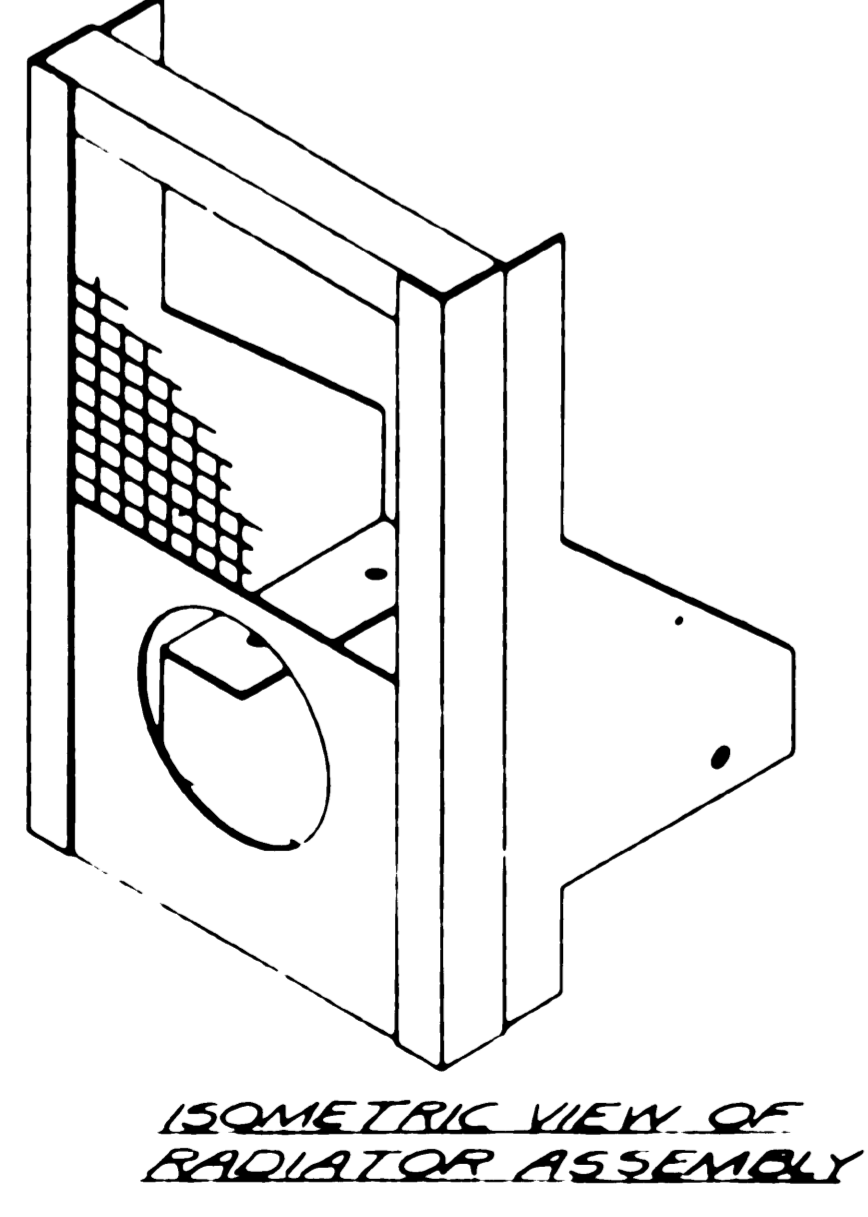
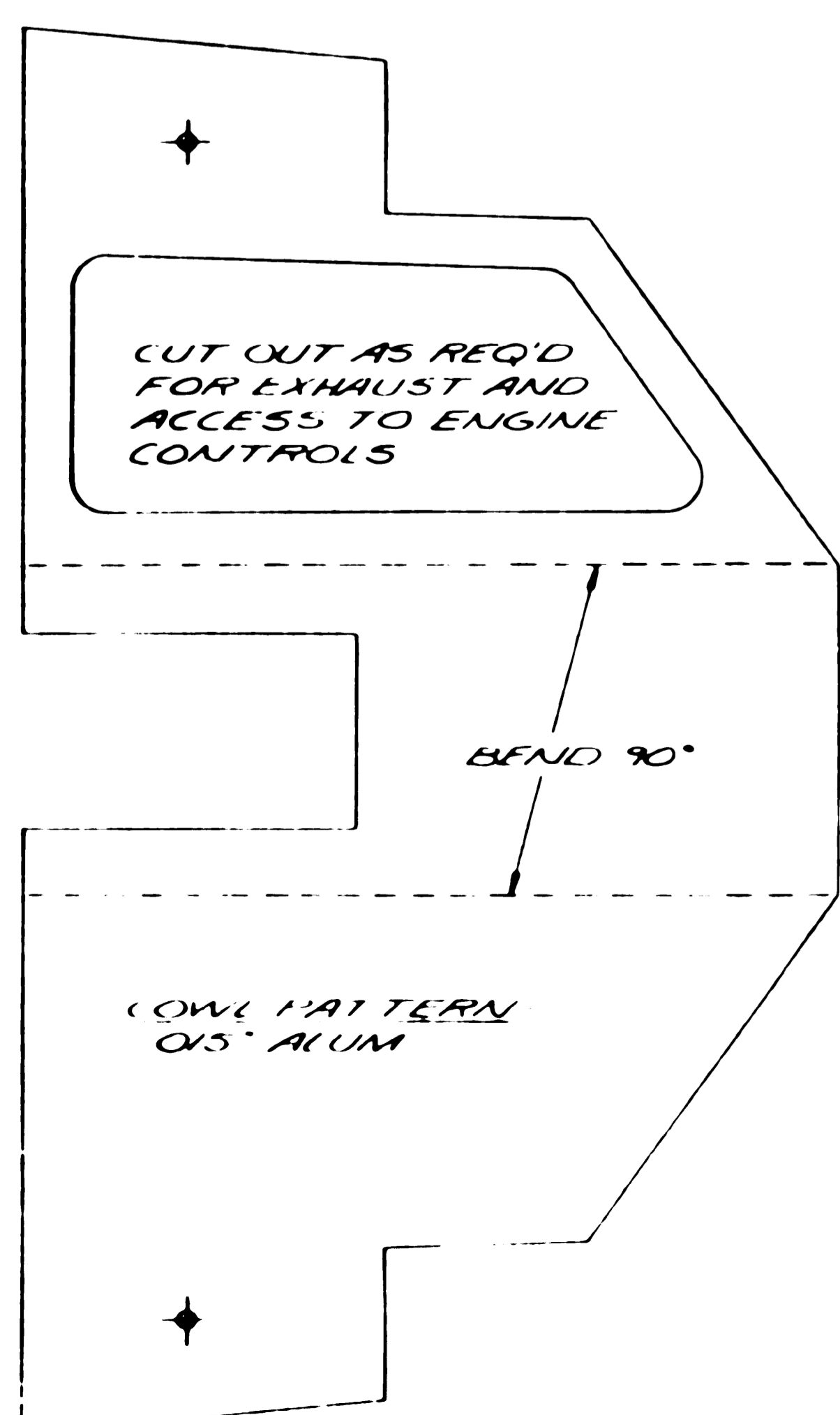
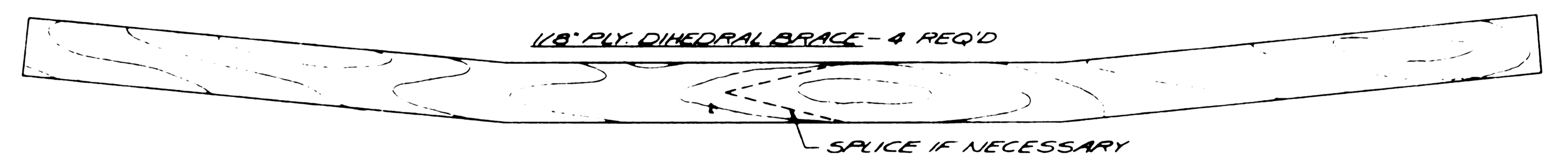
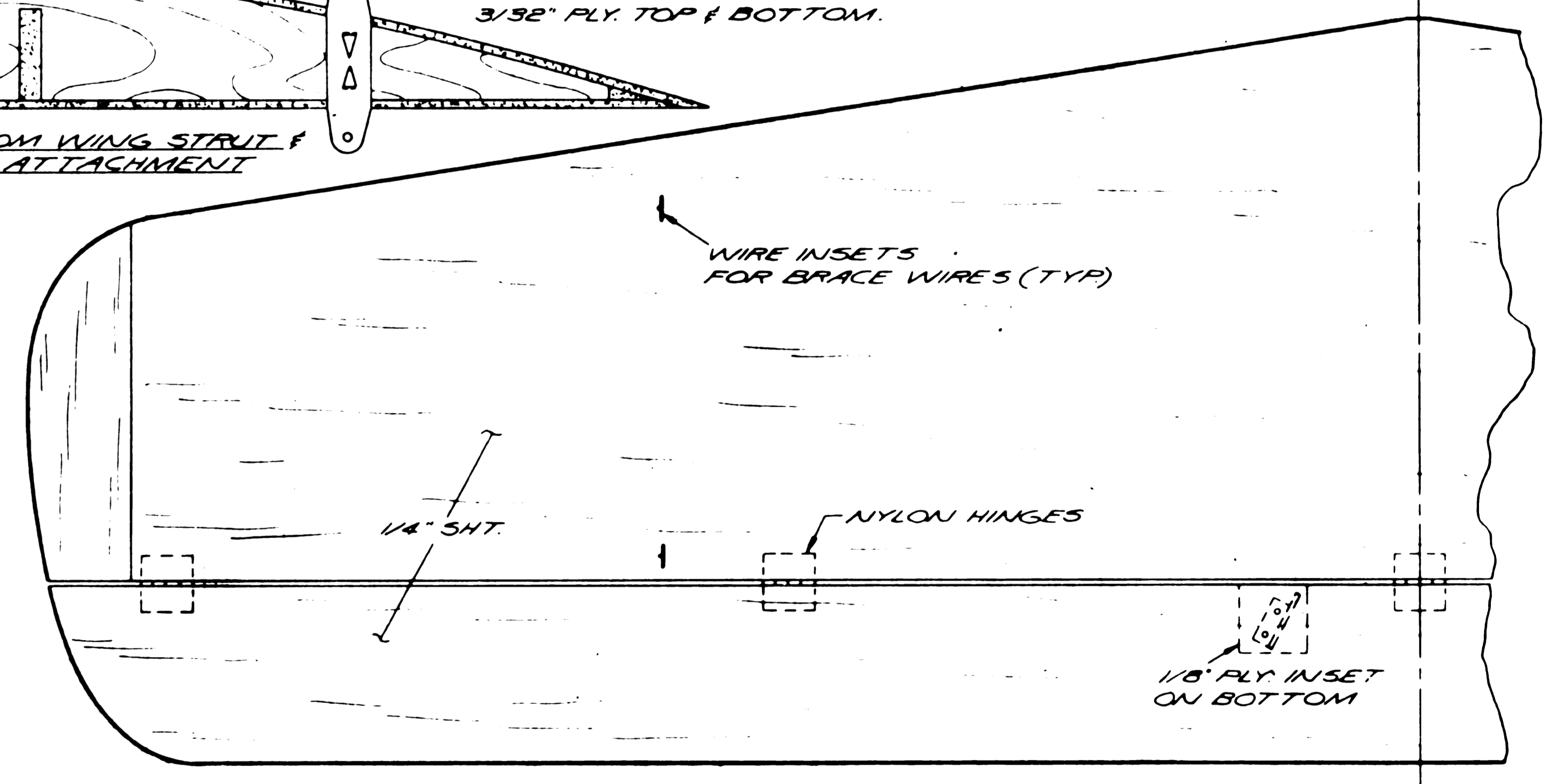
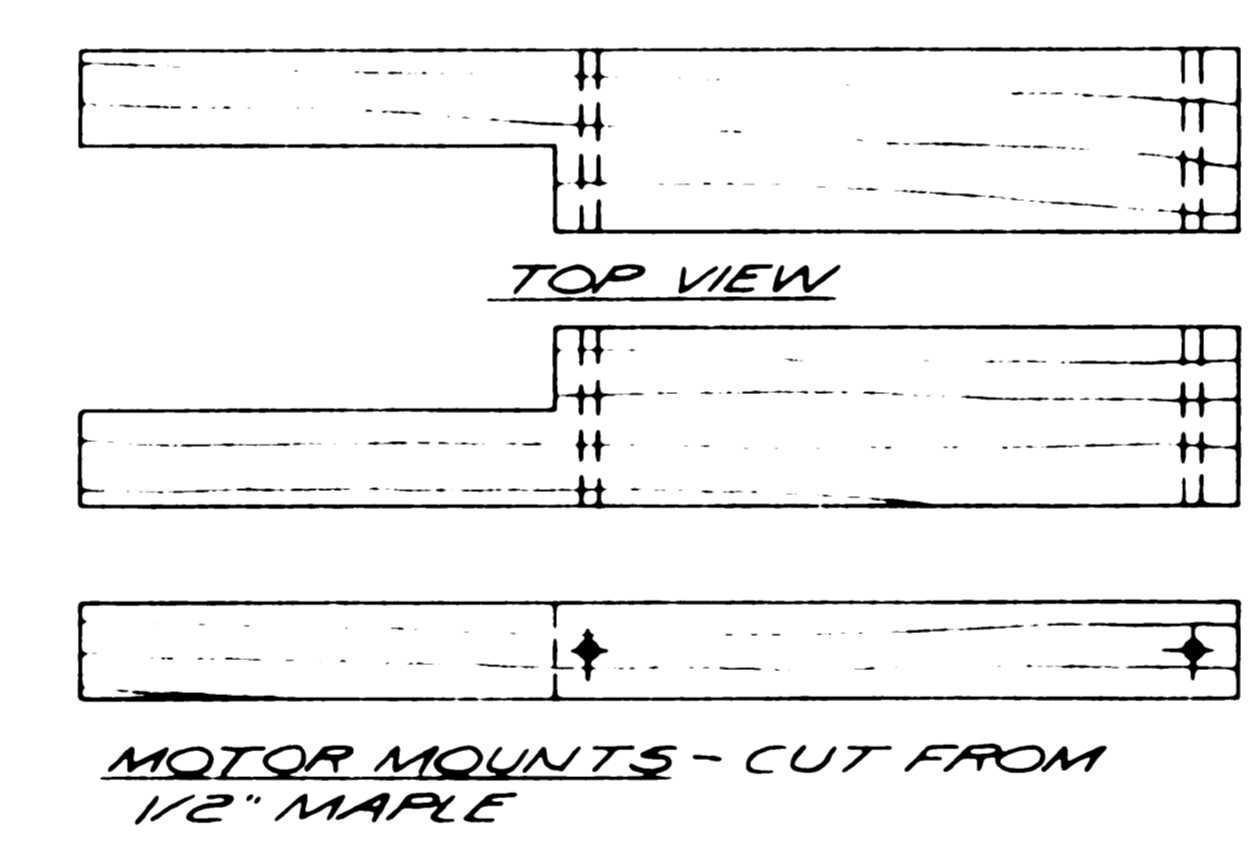
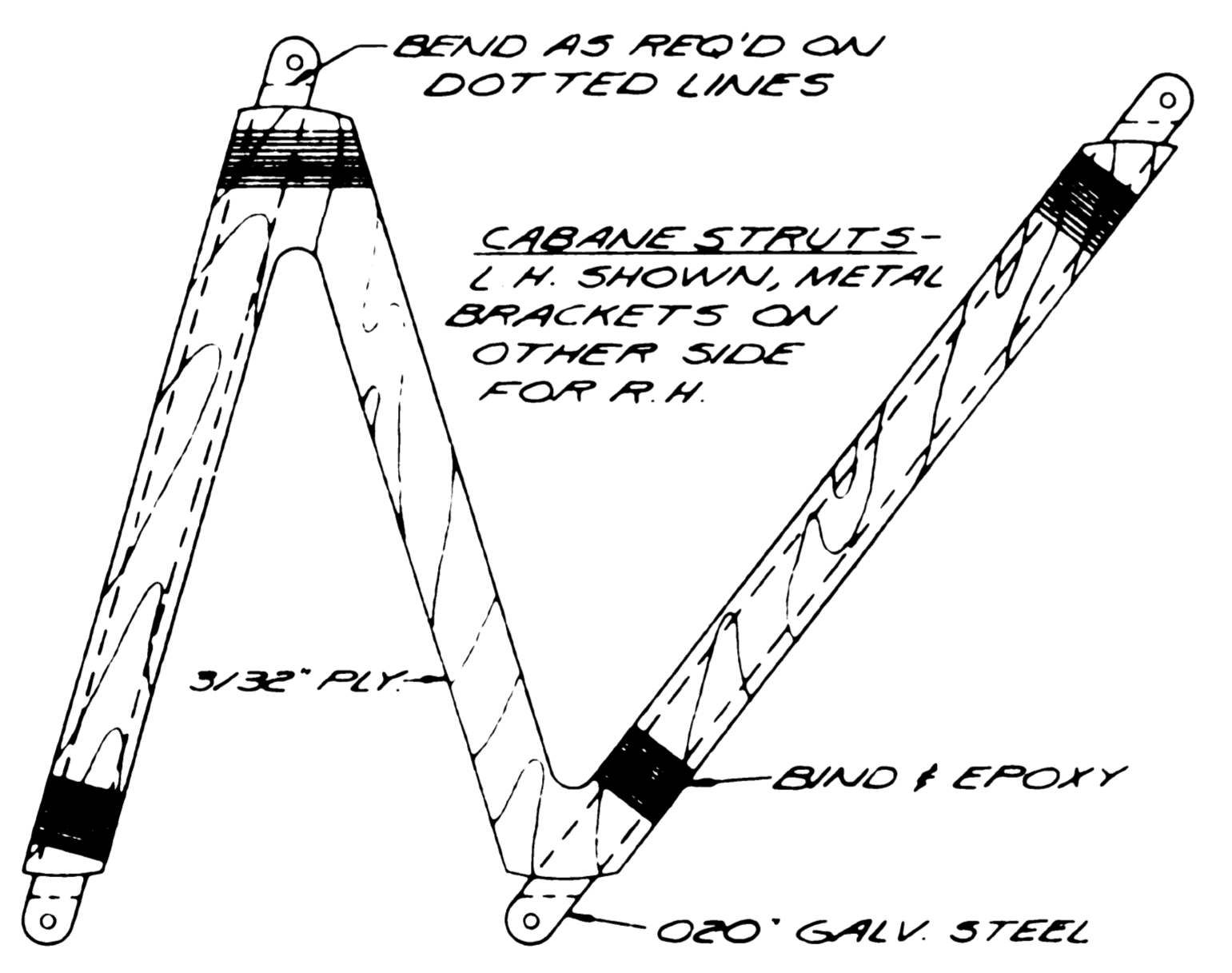
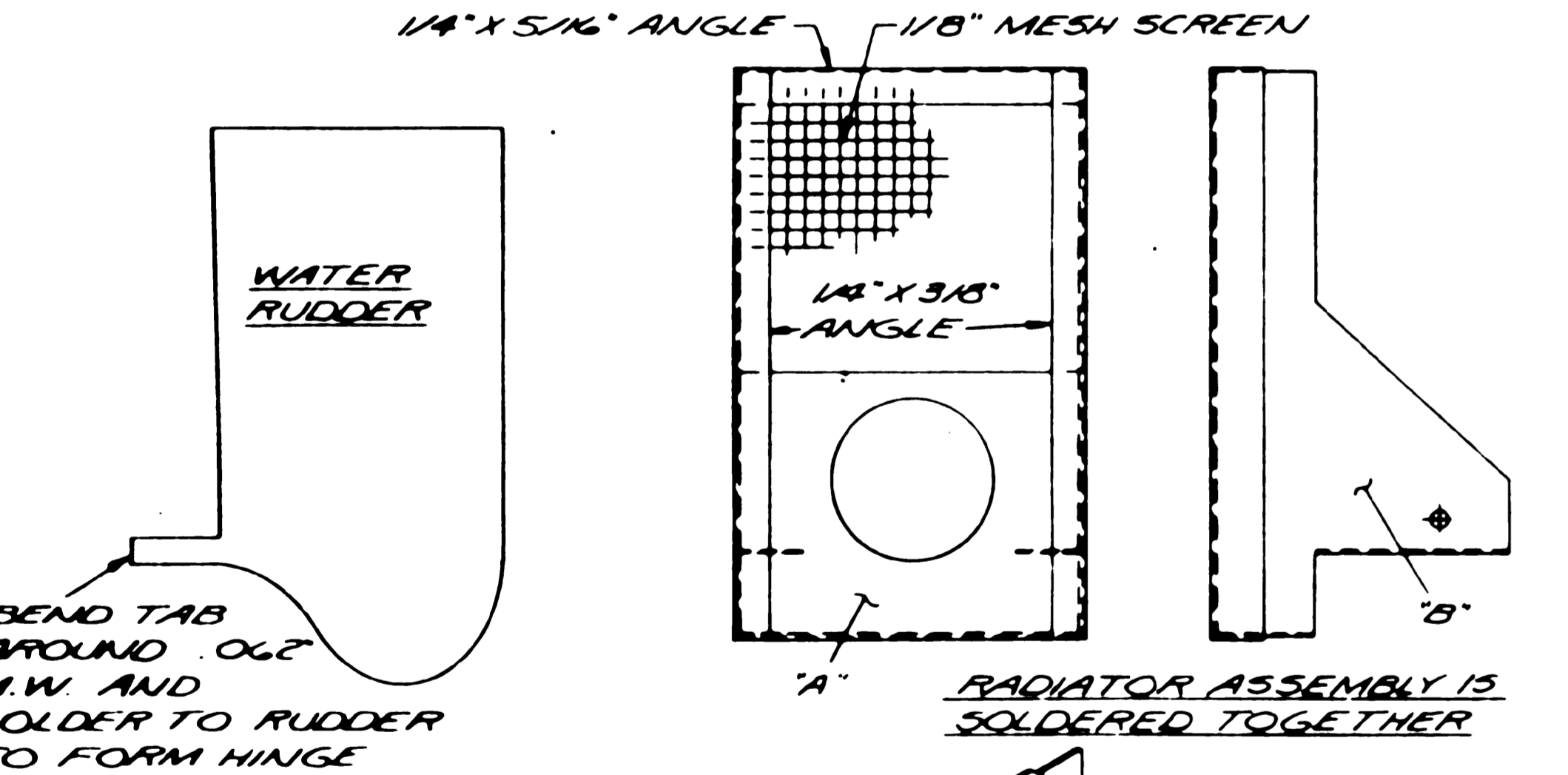


TOP WING CENTER SECTION IS 3/32" Balsa ON TOP, 3/32" PLY ON BOTTOM. BOTTOM WING CENTER SECTION IS 3/32" PLY TOP & BOTTOM.

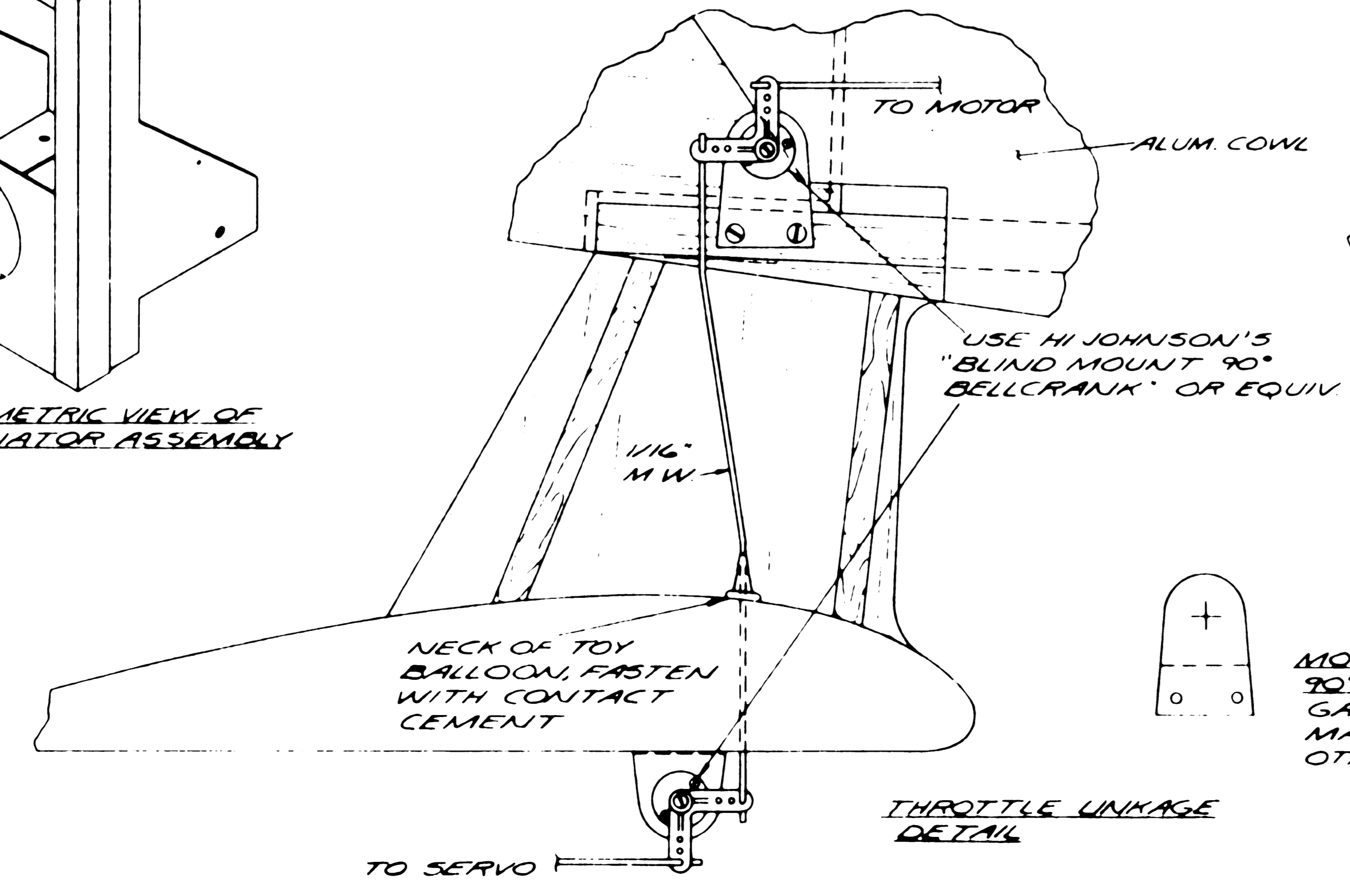
CABLE STRUTS - 3/32" PLY L.H. STRUTS SHOWN; BLIND NUTS ON OTHER SIDE FOR R.H.



NOTE: WATER RUDDER & ALL RADIATOR PARTS ARE 020° GALVANIZED STEEL



NOTE: L.H. FLOAT SHOWN; BLIND NUTS ON OTHER SIDE FOR R.H.



MOUNTING BRACKET FOR 90° BELLCRANKS - 020° GALV. STEEL, 2 REQ'D; MAKE ONE FLAT, BEND OTHER 90° DOTTED LINE

