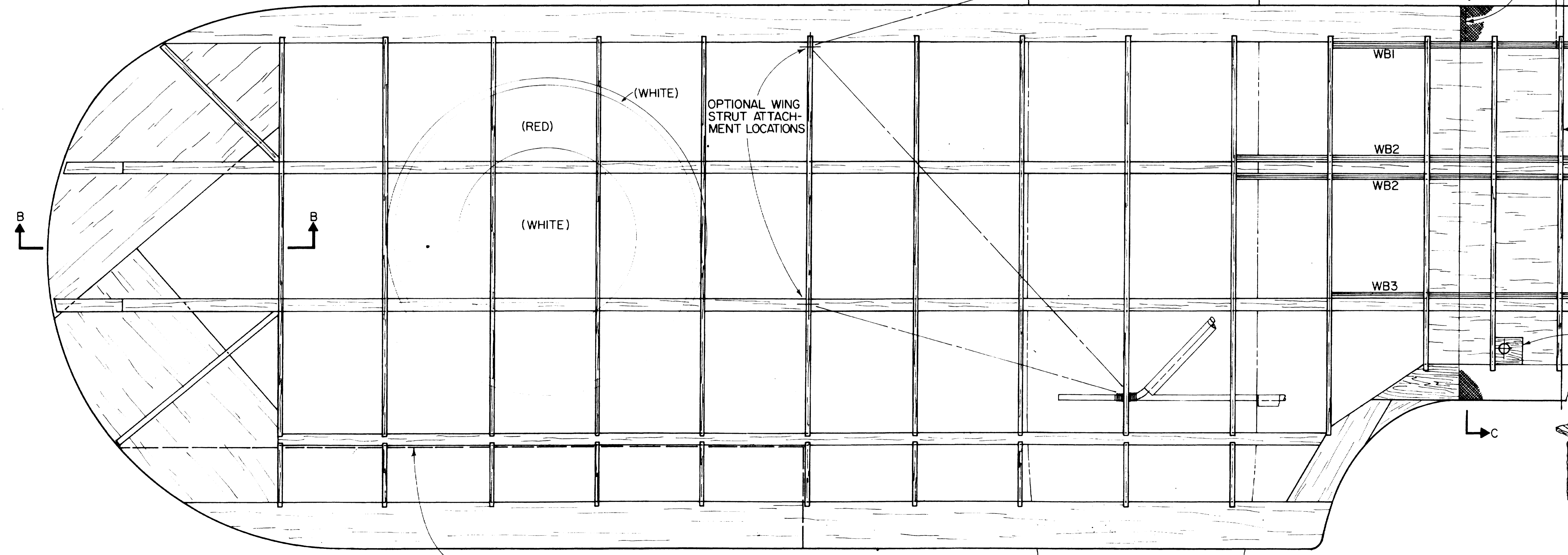
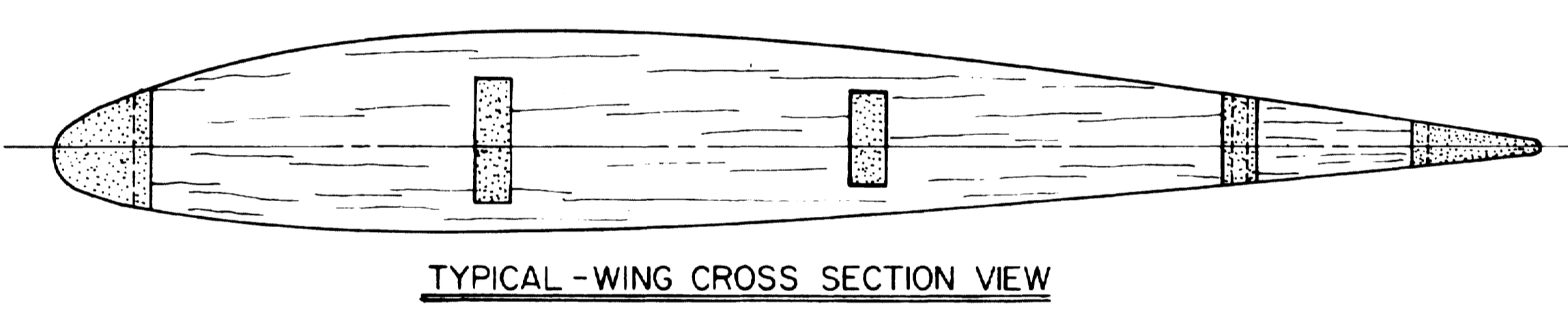
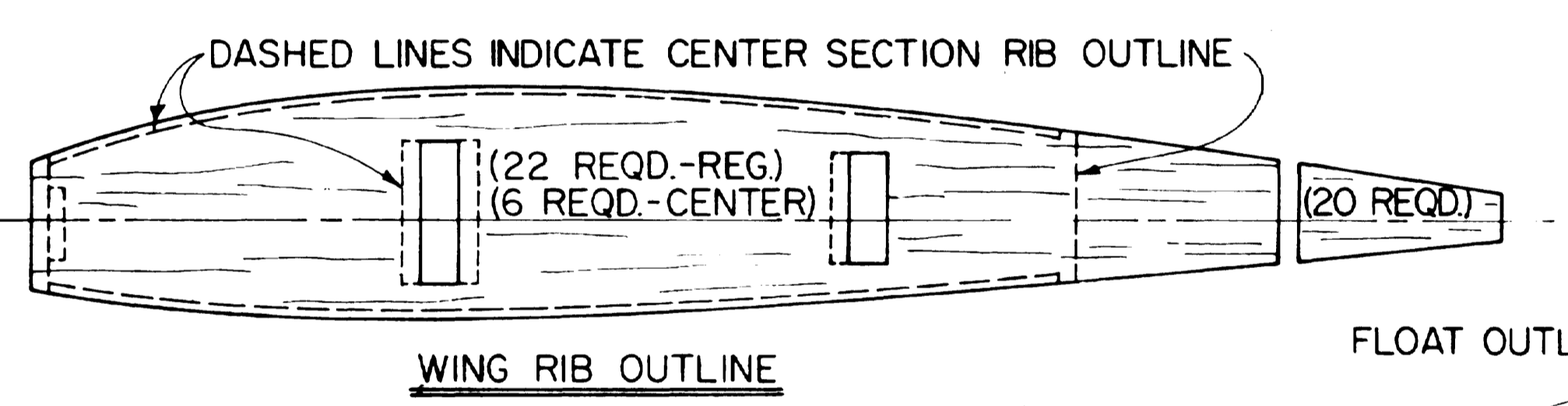
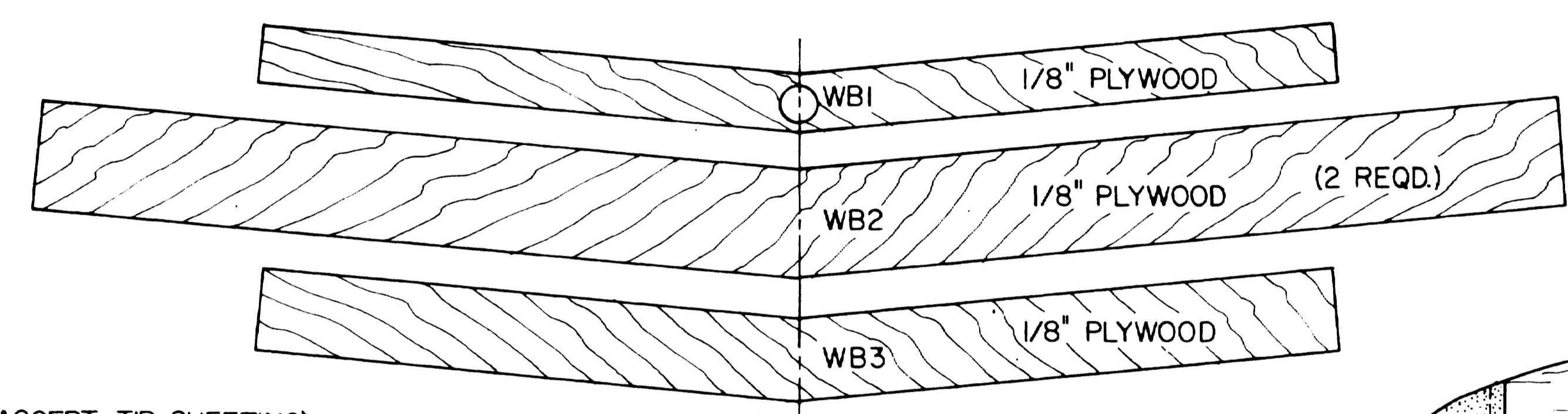
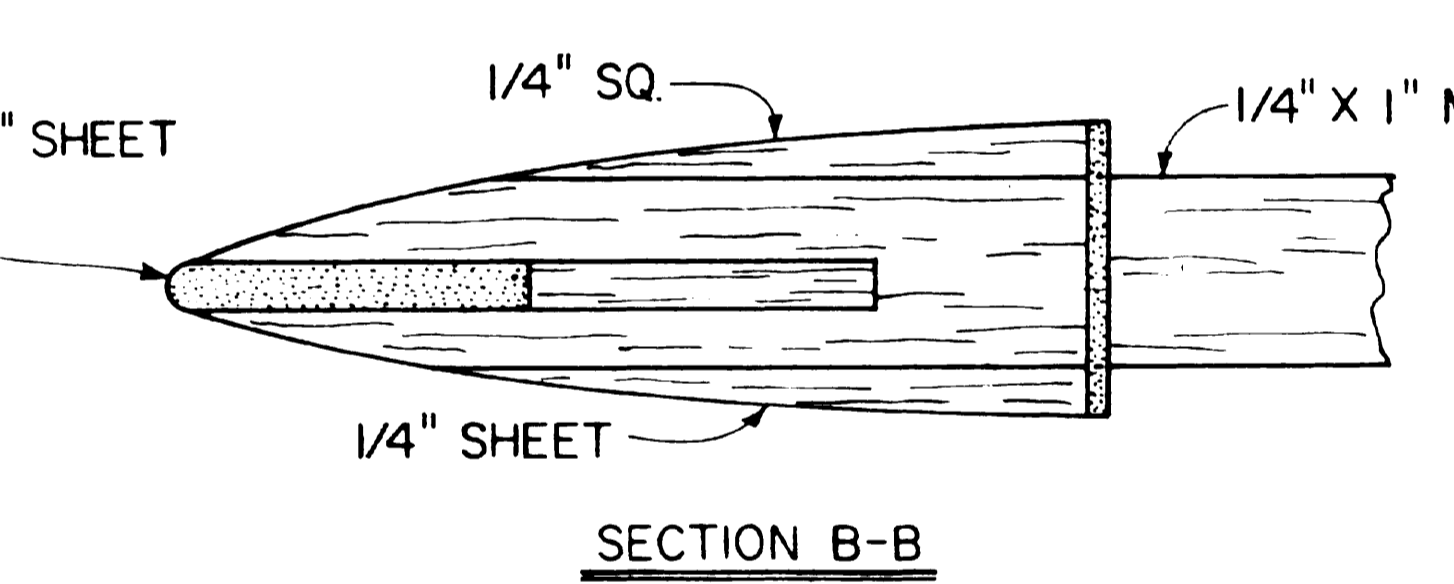
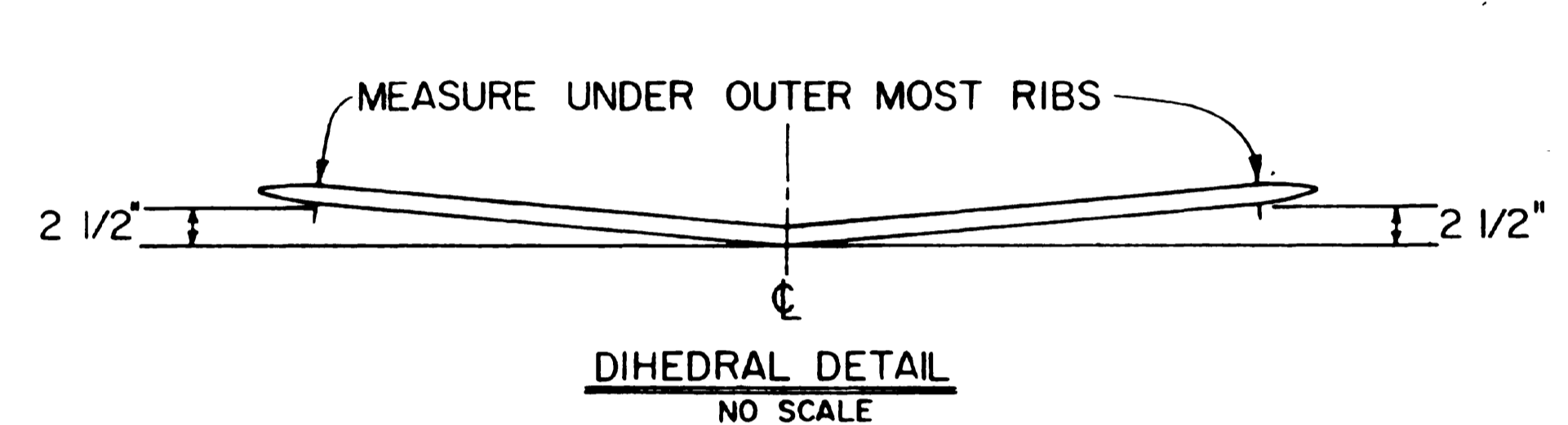
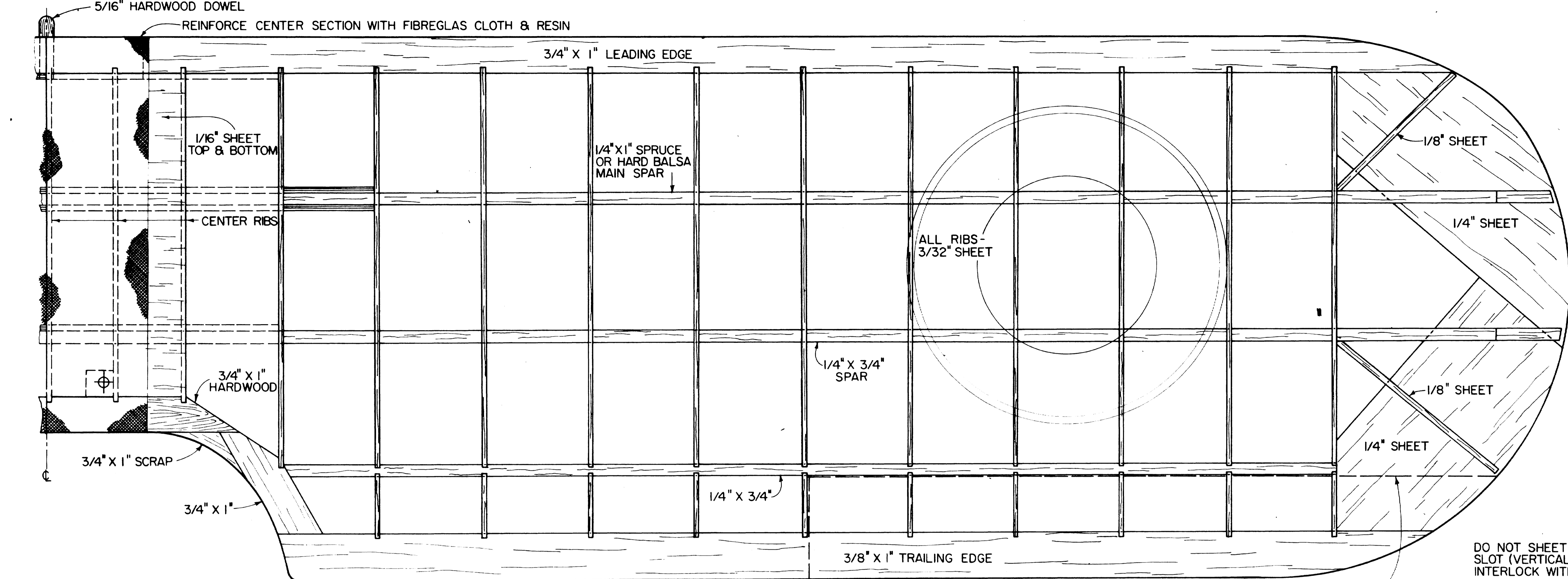
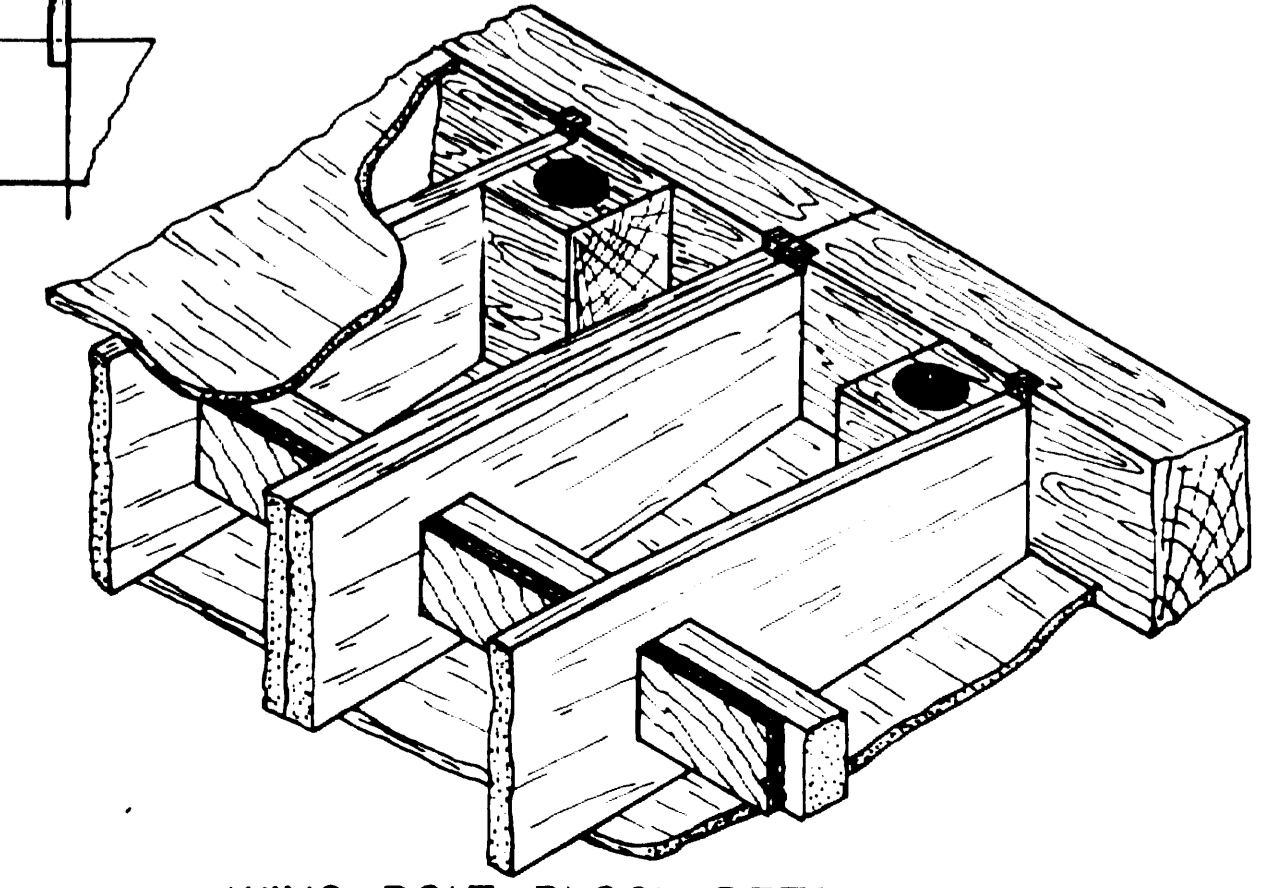
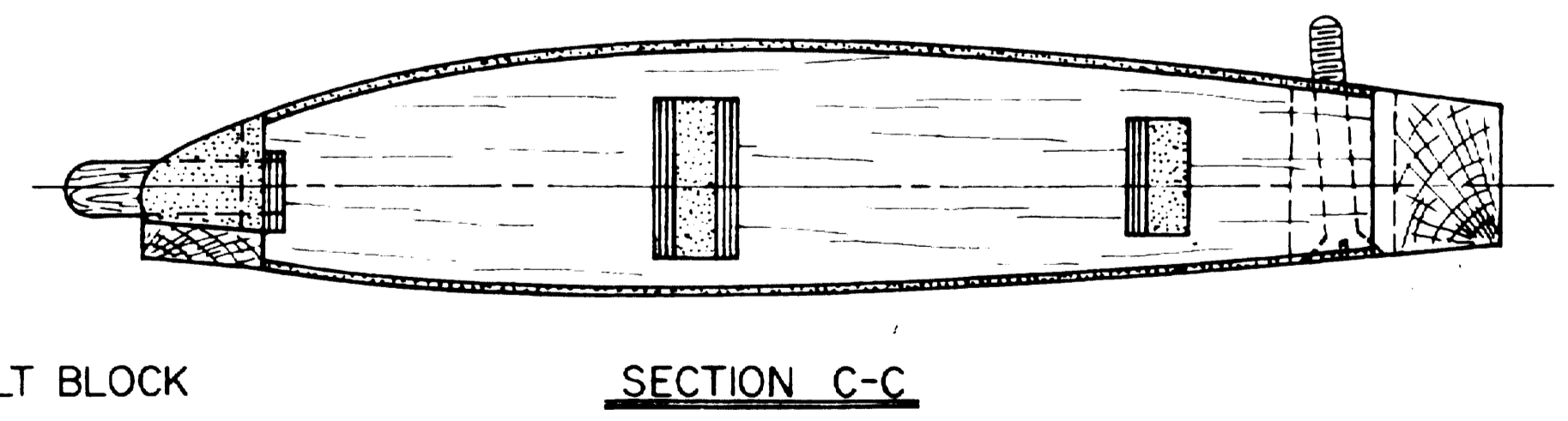
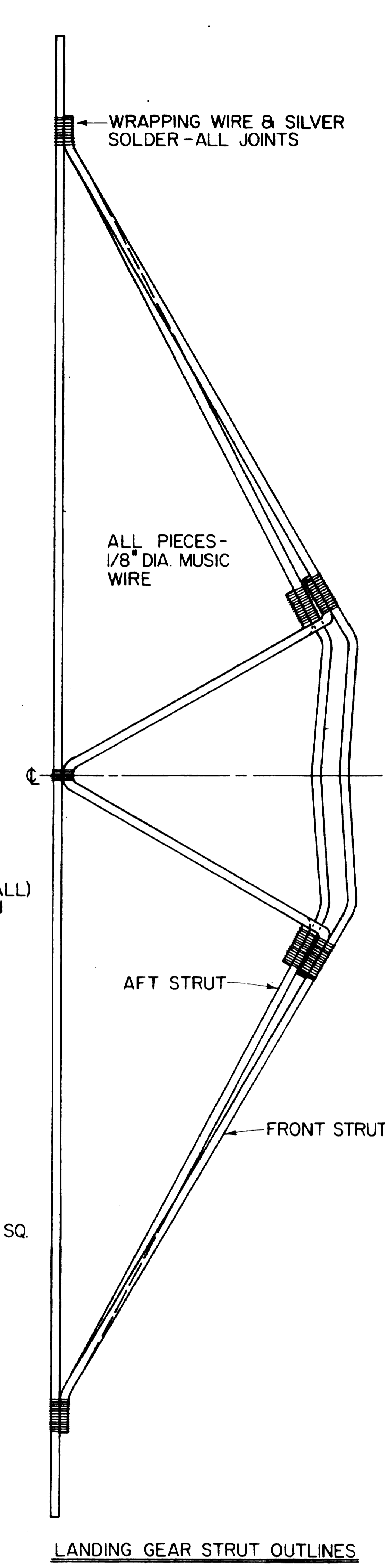
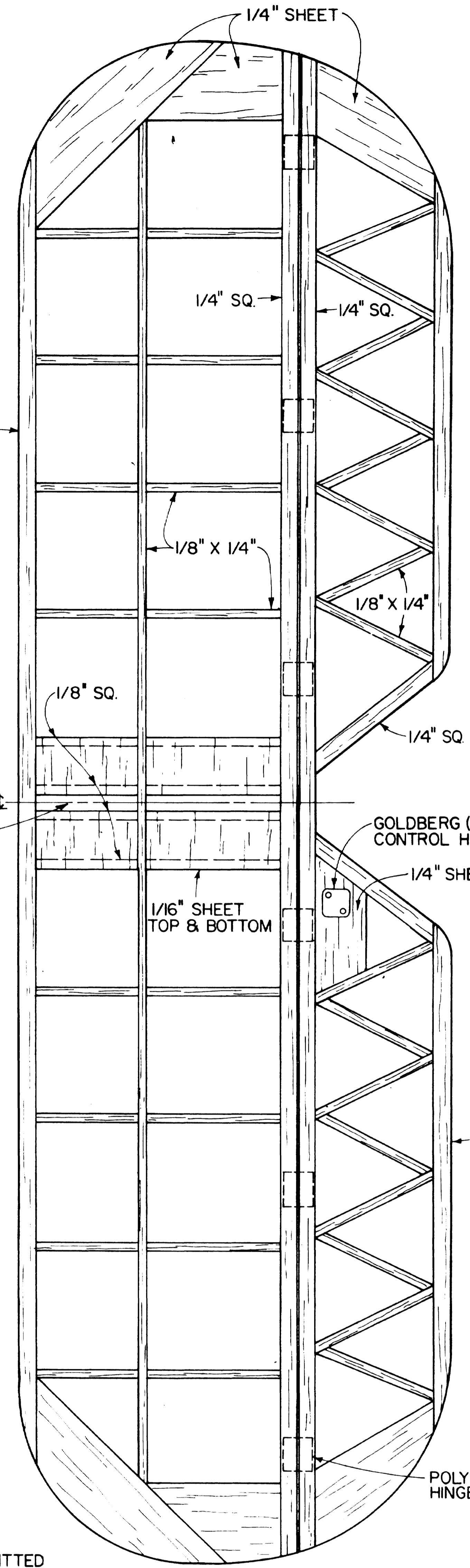


- NOTES**
1. ALL WOOD IS BALSA UNLESS INDICATED OTHERWISE.
  2. THE INSTALLATION OF WING STRUTS IS LEFT TO THE DISCRETION OF THE BUILDER. THE PROPER LOCATION FOR ATTACHMENT OF THESE STRUTS IS SHOWN ON THE WING PLAN VIEW.
  3. THE LANDING GEAR STRUTS ARE ATTACHED TO THE FLOATS BY FIRST DRILLING A SERIES OF 1/16" DIA. HOLES (1/4" O.C.) THRU THE HARDWOOD FLOAT BLOCKS ON BOTH SIDES OF THE HORIZONTAL FLOAT STRUTS. THE STRUTS ARE FASTENED TO THE FLOATS WITH WRAPPING WIRE OR HEAVY FISHING LINE, AND THEN COATED LIBERALLY WITH EPOXY.

**DANISH HM-II**  
**HEINKEL MODEL HE-8**  
 A 40-50 POWERED STAND OFF SCALE DESIGN  
 DESIGNED BY ED MILLER | DRAWN BY *Bob Wallace*



DO NOT SHEET CENTER SECTION SLOT (VERTICAL FIN IS KEYS TO INTERLOCK WITH STABILIZER)



OPTIONAL AILERON OUTLINE - (IF AILERONS ARE TO BE USED - DECREASE THE AMOUNT OF DIHEDRAL TO 1 1/4\"/>

**DANISH HM II**  
**HEINKEL MODEL HE-8**  
 A 40-50 POWERED STAND OFF SCALE DESIGN  
 DESIGNED BY ED MILLER DRAWN BY *Bob Wallace*