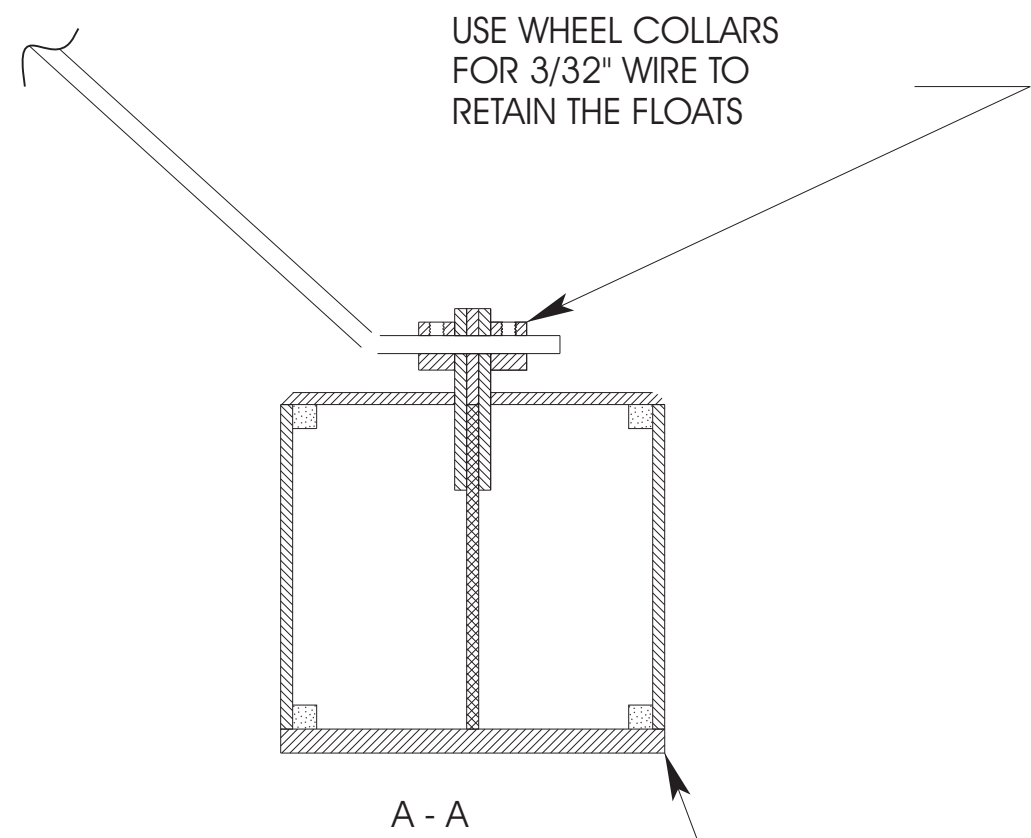
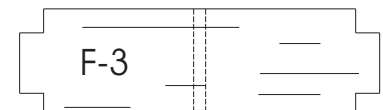
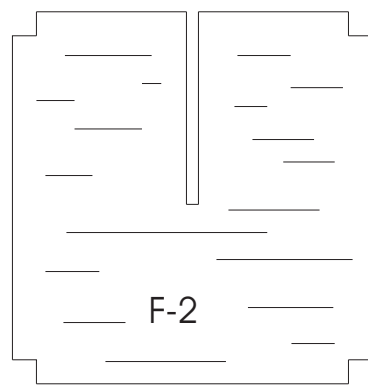
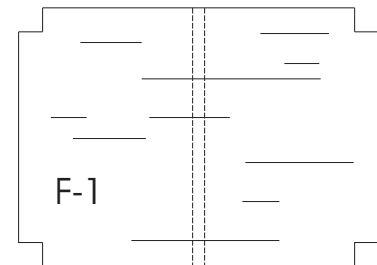


MAKE TWO SETS OF THE FLOAT  
BULKHEADS FROM 1/16" Balsa



USE WHEEL COLLARS  
FOR 3/32" WIRE TO  
RETAIN THE FLOATS

A - A

NOTE: KEEP THE BOTTOM  
EDGES SQUARE

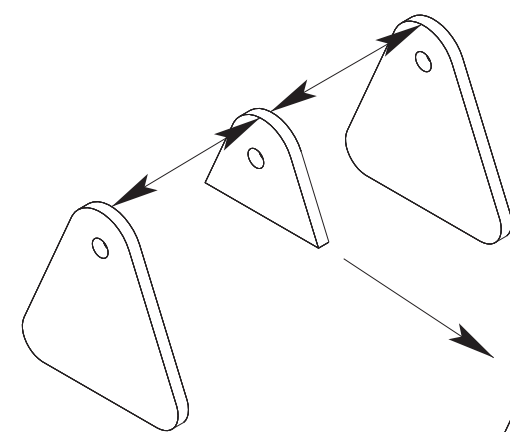


MAKE 4



MAKE 8

MOUNTING LUG PARTS ARE MADE FROM 1/16" PLYWOOD - USE THE KEEL LIGHTING HOLE CUT OUTS AS A SOURCE FOR STOCK.



MOUNTING LUG ASSEMBLY

THE MOUNTING LUGS FIT OVER THE PLYWOOD KEEL IN THE INDICATED LOCATIONS. GLUE IN PLACE BEFORE APPLYING THE TOP PLANKING.

1/8" SQUARE Balsa BULKHEAD  
SUPPORTS - ALL BULKHEAD  
LOCATIONS

TOP PLANKING IS 1/16" Balsa WITH THE GRAIN  
RUNNING ACROSS THE FLOAT - TOP SHEETING NOT  
SHOWN FOR CLARITY

1/8" SQUARE Balsa CROSS PIECE  
AT THE BOTTOM OF THE STEP

MAKE NOSE PIECE FROM 1/4"  
SQUARE Balsa

EXISTING 3/32" MUSIC WIRE  
LANDING GEAR LEGS

1/8" SQUARE Balsa STOCK GLUED TO  
THE INSIDE OUTLINE OF EACH FLOAT SIDE

F-1

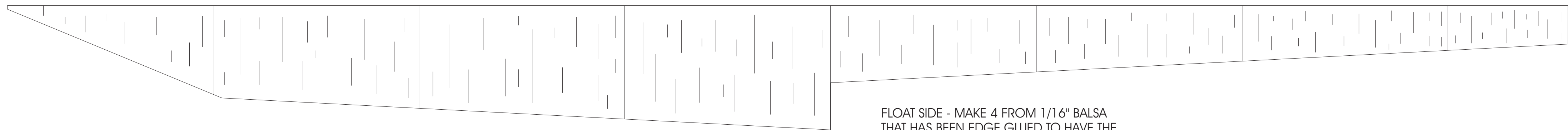
F-2

F-3

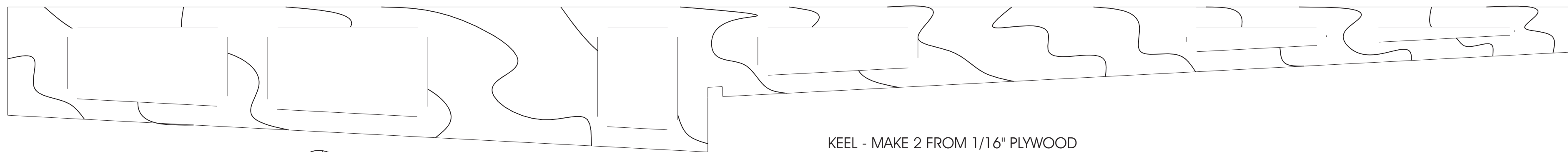
BOTTOM PLANKING OF THE FORE BODY IS  
1/8" Balsa WITH THE GRAIN RUNNING  
ACROSS THE FLOAT.

MAKE THE REAR SUPPORT FROM 3/32" MUSIC WIRE.  
BEND TO GIVE THE SAME SPAN AS THE EXISTING  
LANDING GEAR LEGS, BUT 1/4" LESS VERTICAL  
HEIGHT. THE DIFFERENCE IN HEIGHT WILL PRODUCE A  
POSITIVE WING ANGLE WHEN THE FLOATS ARE MOVING  
THROUGH THE WATER.

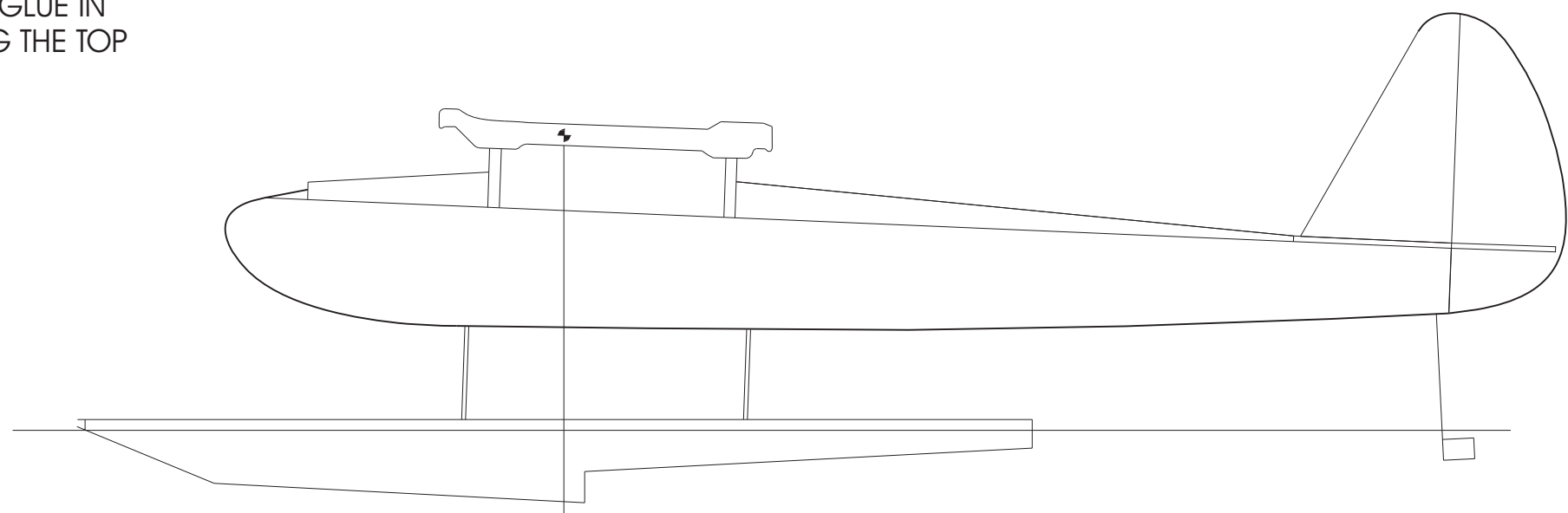
BOTTOM PLANKING ON THE AFTER BODY IS 1/16"  
Balsa WITH THE GRAIN RUNNING ACROSS THE  
FLOAT.



FLOAT SIDE - MAKE 4 FROM 1/16" Balsa  
THAT HAS BEEN EDGE GLUED TO HAVE THE  
GRAIN RUN VERTICAL



KEEL - MAKE 2 FROM 1/16" PLYWOOD



GENERAL ARRANGEMENT OF THE FLOAT INSTALLATION. USE A SECOND DUBRO TAIL WHEEL ASSEMBLY FOR THE WATER RUDDER. BEND THE 'TILLER' TO MATCH THE TAIL WHEEL ARRANGEMENT. THE WATER RUDDER SHOULD EXTEND TO JUST BELOW THE WATER LINE WHEN THE MODEL IS FLOATING ON THE WATER. THIS WILL BE ABOUT 3.5". THE SIZE OF THE WATER RUDDER SHOULD BE AROUND 1/2" X 3/4". A GOOD MATERIAL FOR THE WATER RUDDER IS 1/16" PLYWOOD.

FLOATS FOR THE SR BATTERIES CUTIE

Designed and Drawn by Paul Bradley

April 2002