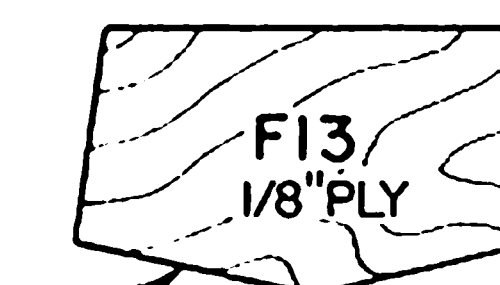
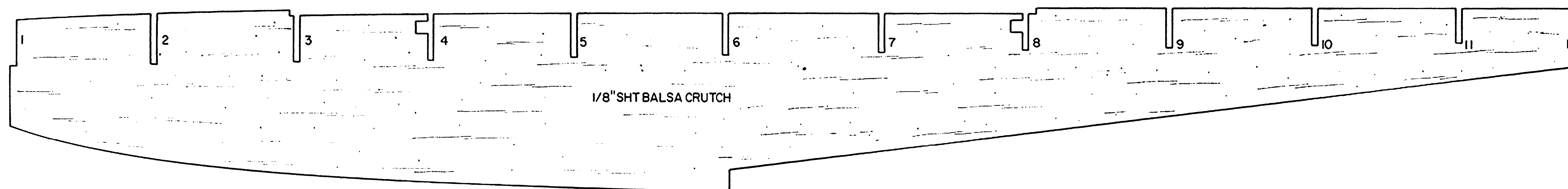
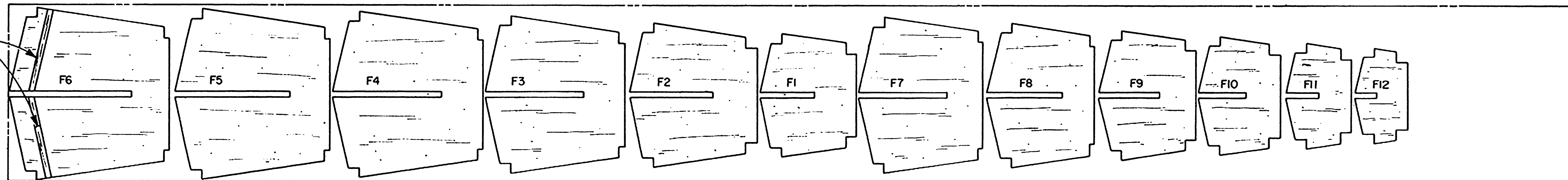
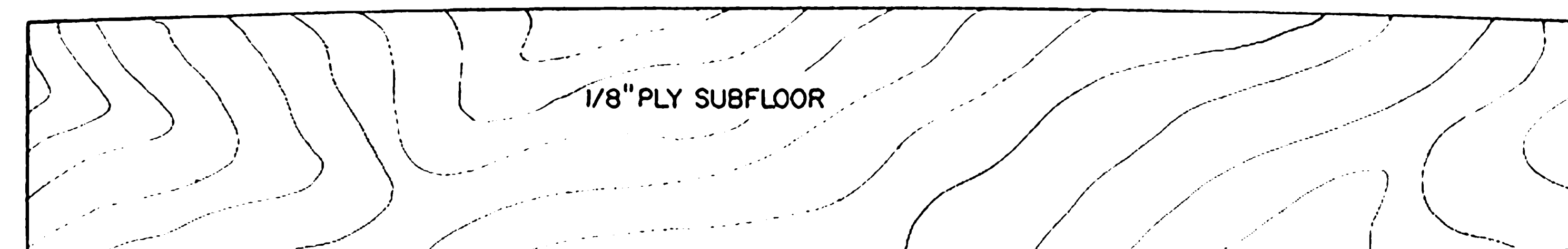
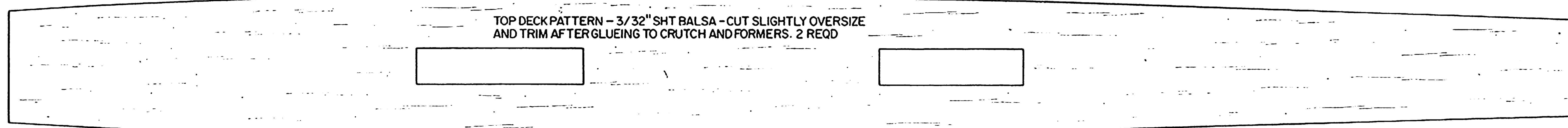


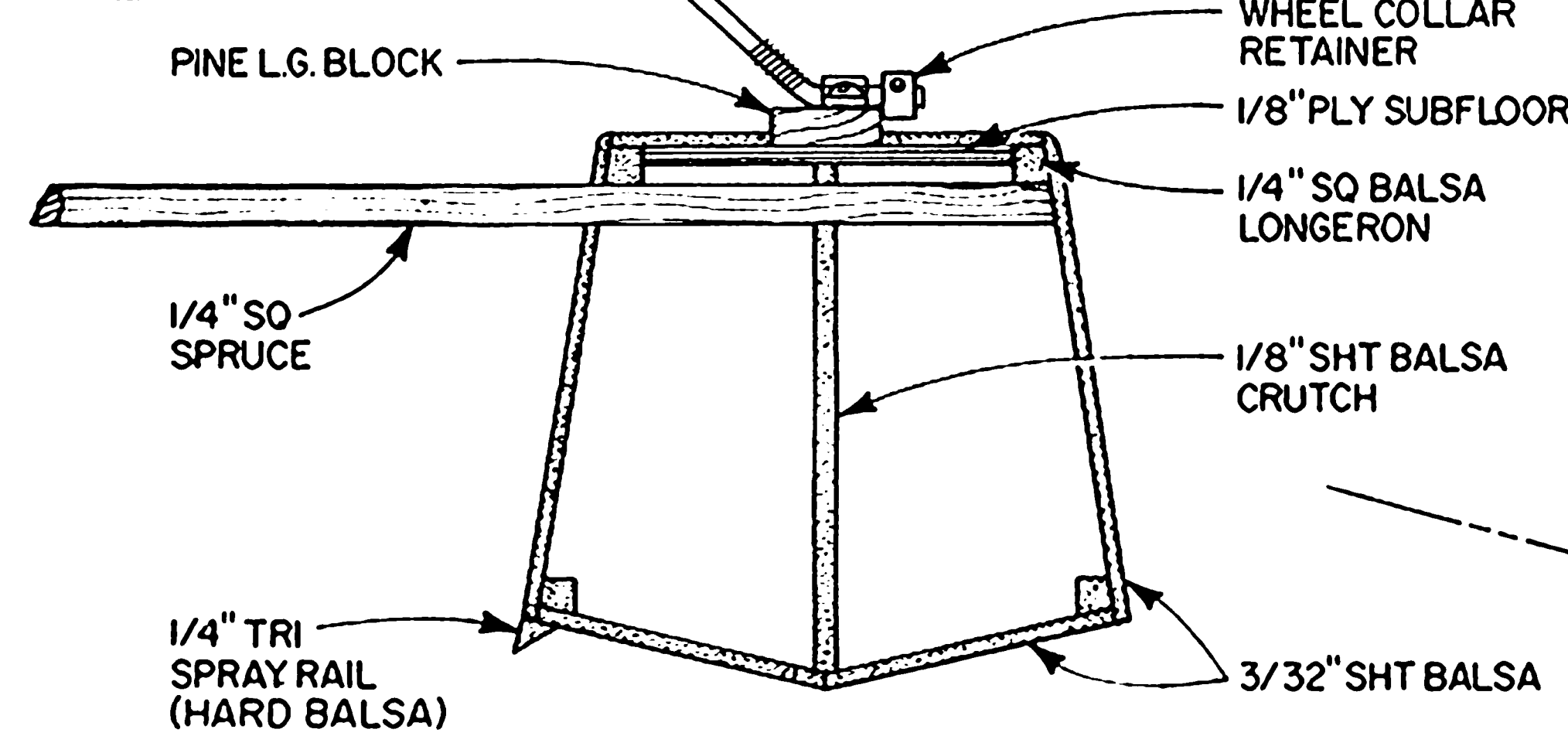
1/8" SQ BALSA
BOTTOM SHEETING
SUPPORT



CUT SLIGHTLY
OVERSIZE - APPLY -
TRIM TO SHAPE.

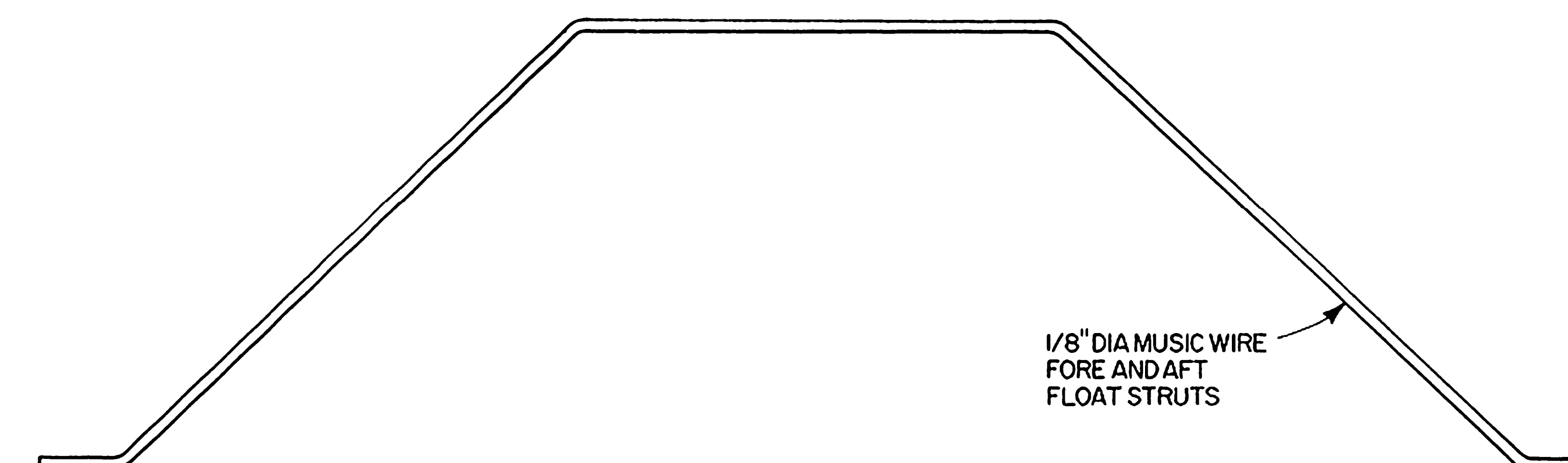


REAR SPREADER BAR 18-1/4" LONG
FRONT SPREADER BAR 18-1/2" LONG

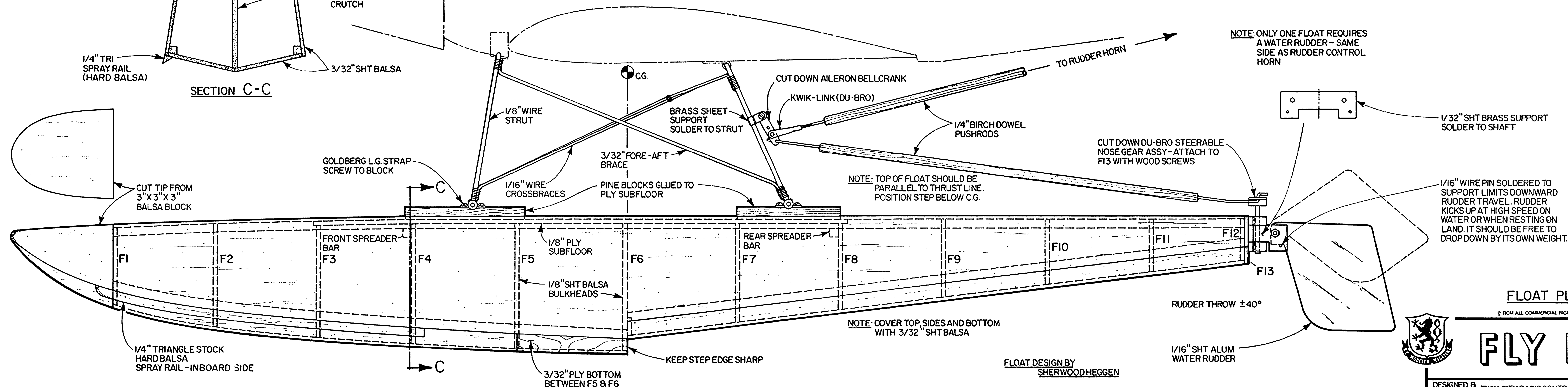


SECTION C-C

NOTE: COVER FLOATS WITH 3/4 OZ FIBERGLASS, SILK OR COVERITE.
PAINT WELL - THEY MUST BE WATERTIGHT!



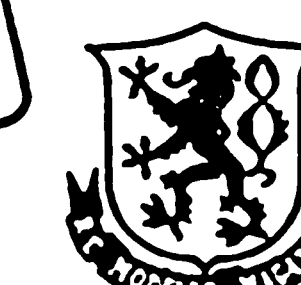
**NOTE: ONLY ONE FLOAT REQUIRES
A WATER RUDDER - SAME
SIDE AS RUDDER CONTROL
HORN**



FLOAT PLAN

© FROM ALL COMMERCIAL RIGHTS RESERVED

SHEET 3 OF 3



FLY BABY

DESIGNED & DRAWN BY TWIN CITY RADIOCONTROLLERS / PLANS BY JERRY SMITH

By H.E

