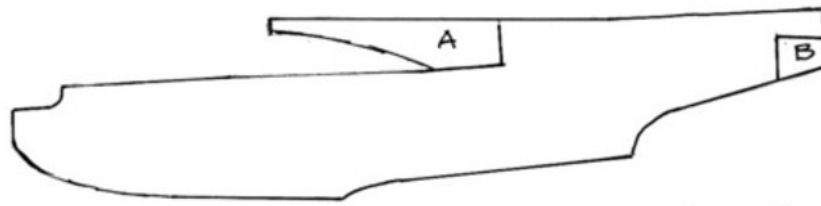
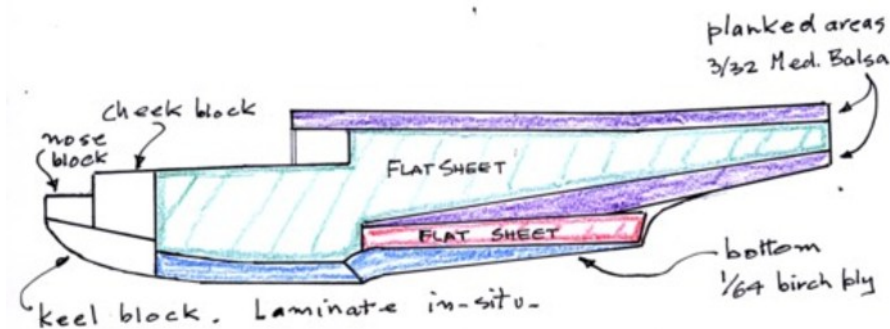


Hull

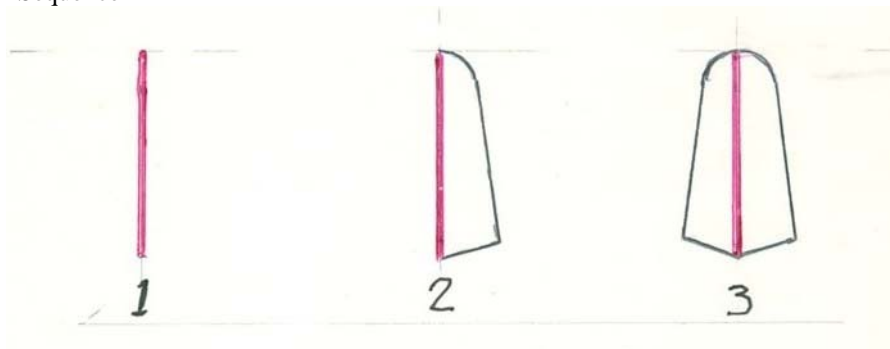


A and B are constructed integral with the hull, then cut-away. Ensure that adjacent bulkheads do not adhere

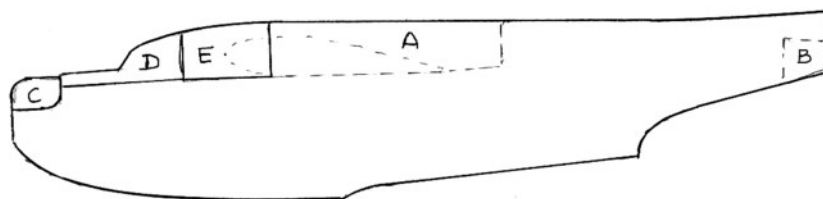


Flat sheet sides are 3/32" medium balsa. Cut to drawing patterns, but 0.5" oversize all round. Pin to bulkheads to obtain final shape. Make two of each.

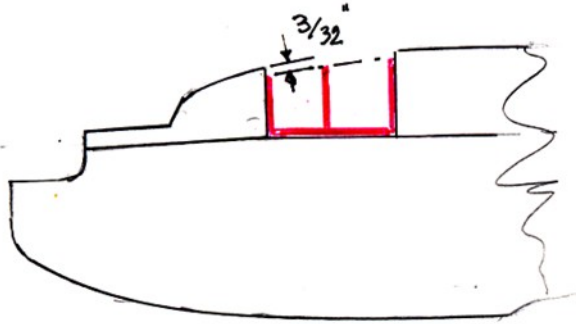
Main Hull Sequence



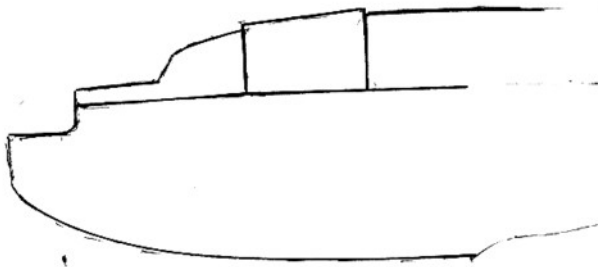
- [1] Assemble centre keel over drawing, on a flat board.
- [2] Build left side onto keel. As far as possible, this work should be done with the keel held down to the board. The left noseblock and cheekblock should be fitted. The keelblock and the ply bottom should not be fitted. Cut tailplane slot. Check for distortion, and correct any.
- [3] Complete the right side "in the hand". Fit decking forward of bulkhead C. Fit keelblocks and ply bottom. Carve nose to finished shape, and sand smooth all surfaces. Build-up fillets on rear underside, with light filler. Some bits of the keel intrude into the battery and equipment bays; they should be cut away.



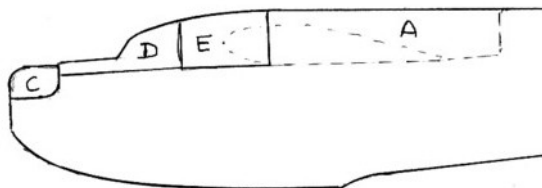
Before separating A from main hull, make D and E. Ensure that the width of D blends with the main hull



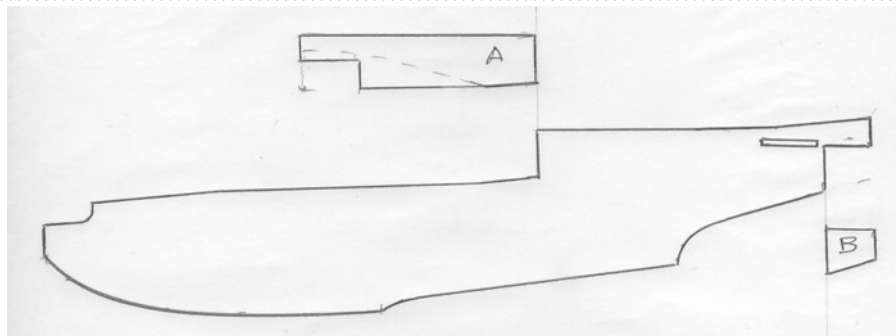
To assemble E: Pin D temporarily in place. Assemble the frame of E to fill the gap between A and D. The profiles of the end bulkheads should be inset $3/32''$. The profile of the centre bulkhead should allow for straight planking



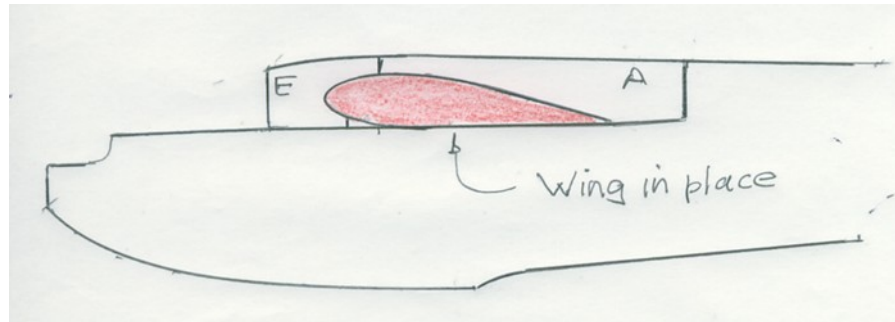
Skin with straight planks, $3/16''$ light balsa.



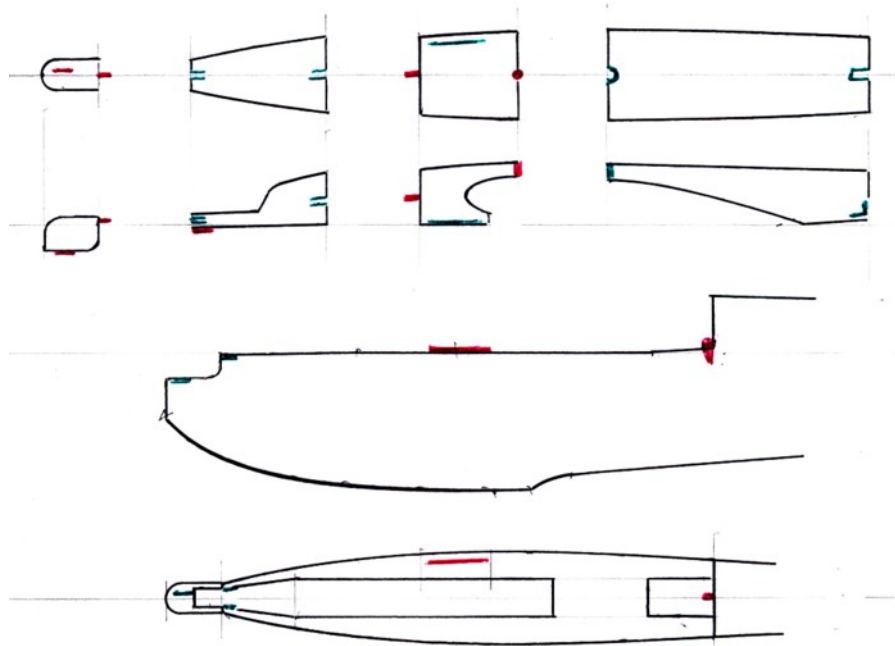
Carve E to blend with adjacent parts. Mark wing profile on A and E, both sides; do not cut.



Separate A and B from main hull. Finish decking and hull internals.



Trim A and E to fit to wing. Band the wing to the hull, securely, and check alignment. Trim A to fit to wing, then complete the wing fillets “in situ”. Trim E to fit to the wing leading edge.



— pins, tabs, projecting strips

— holes, slots, grooves

Locating features.

Fix fin and tailplane. It is difficult to work on the hull when these items are in-place, so make this the last job. Make tailplane in one piece, then separate left and right so that they can be inserted from each side.

Battery access



Photos



