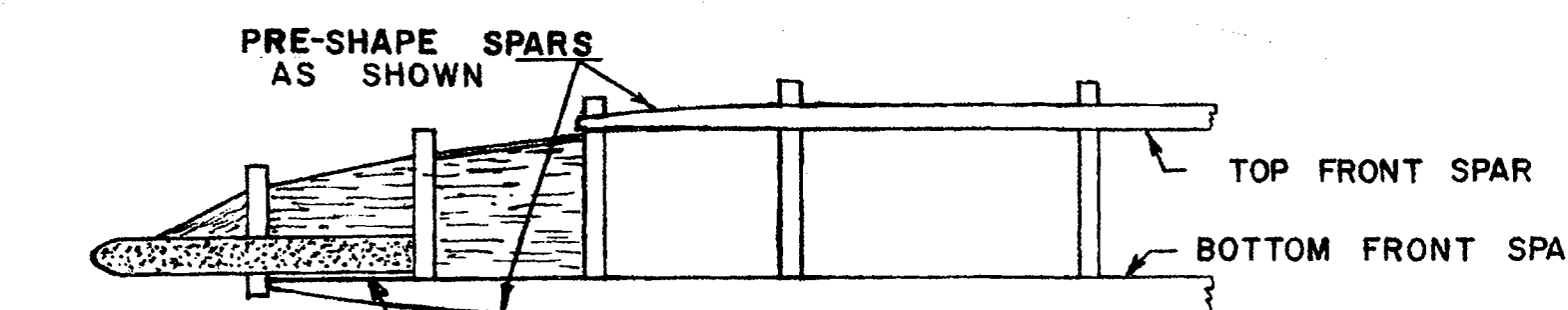
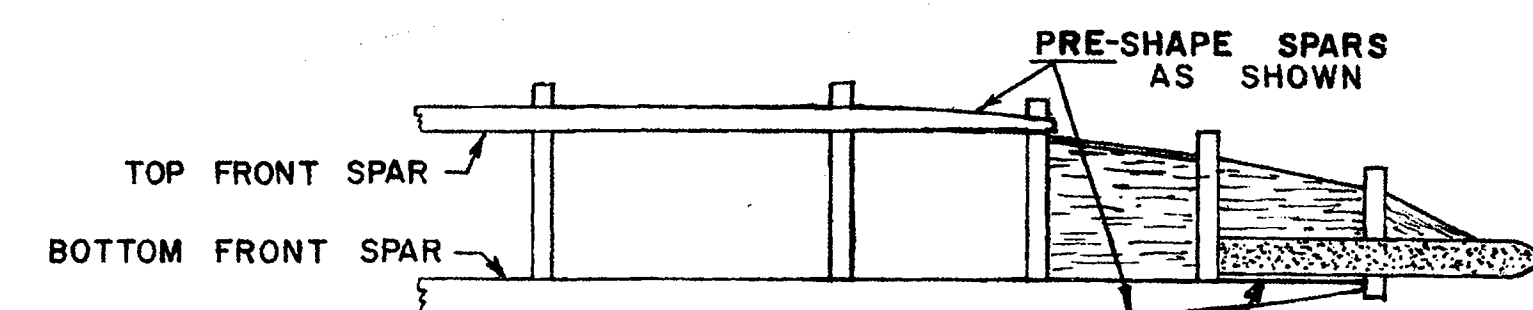
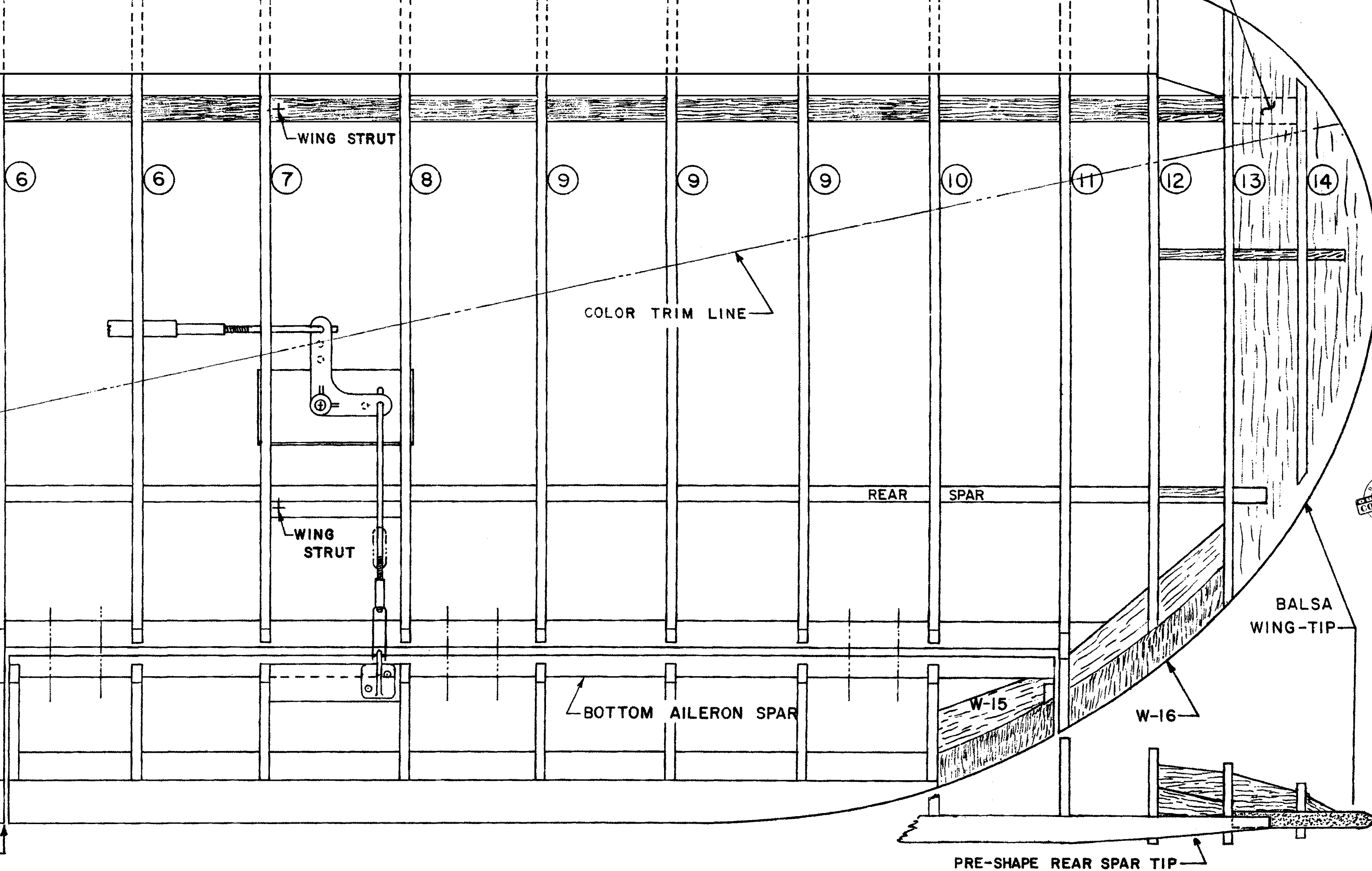
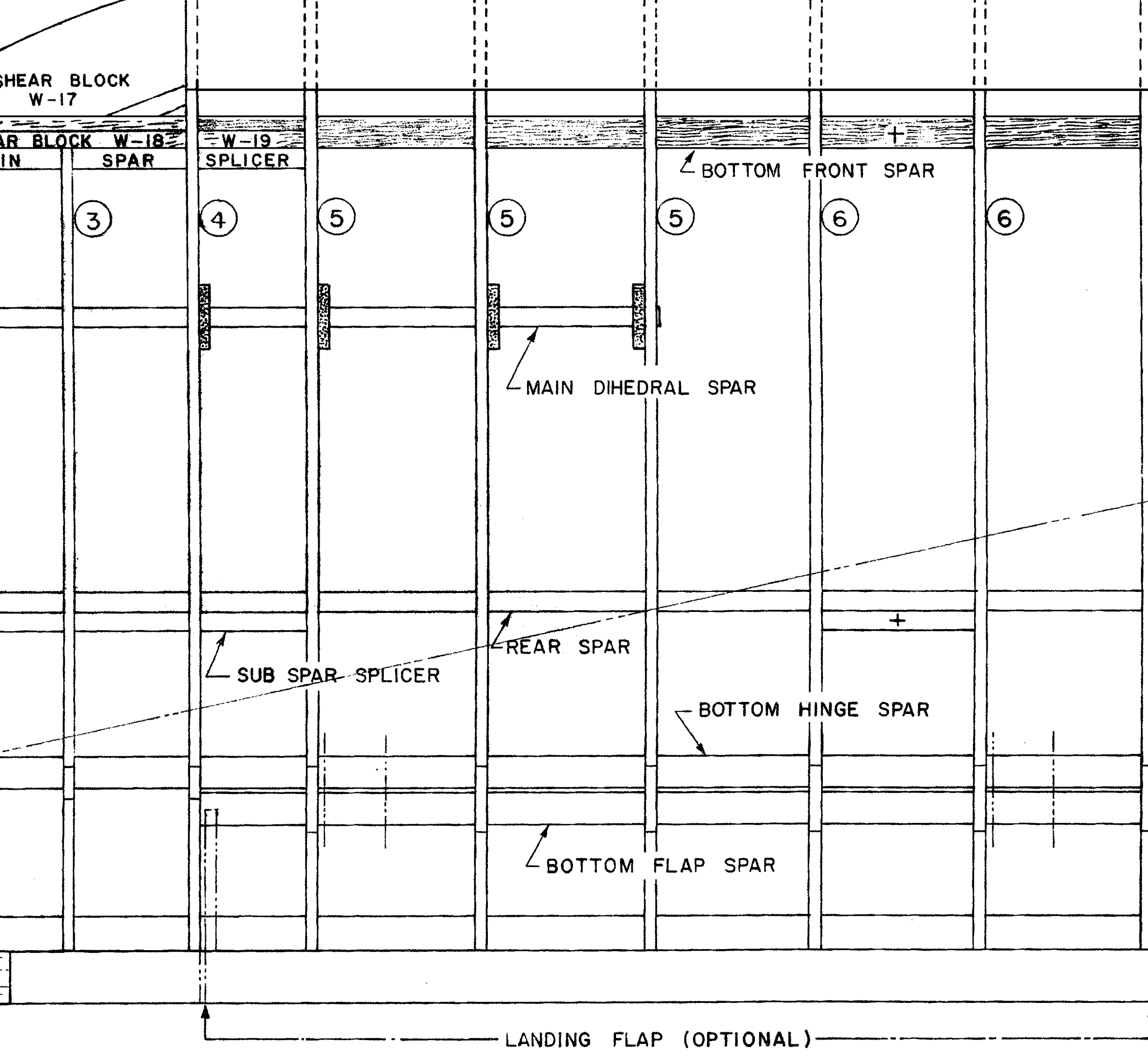
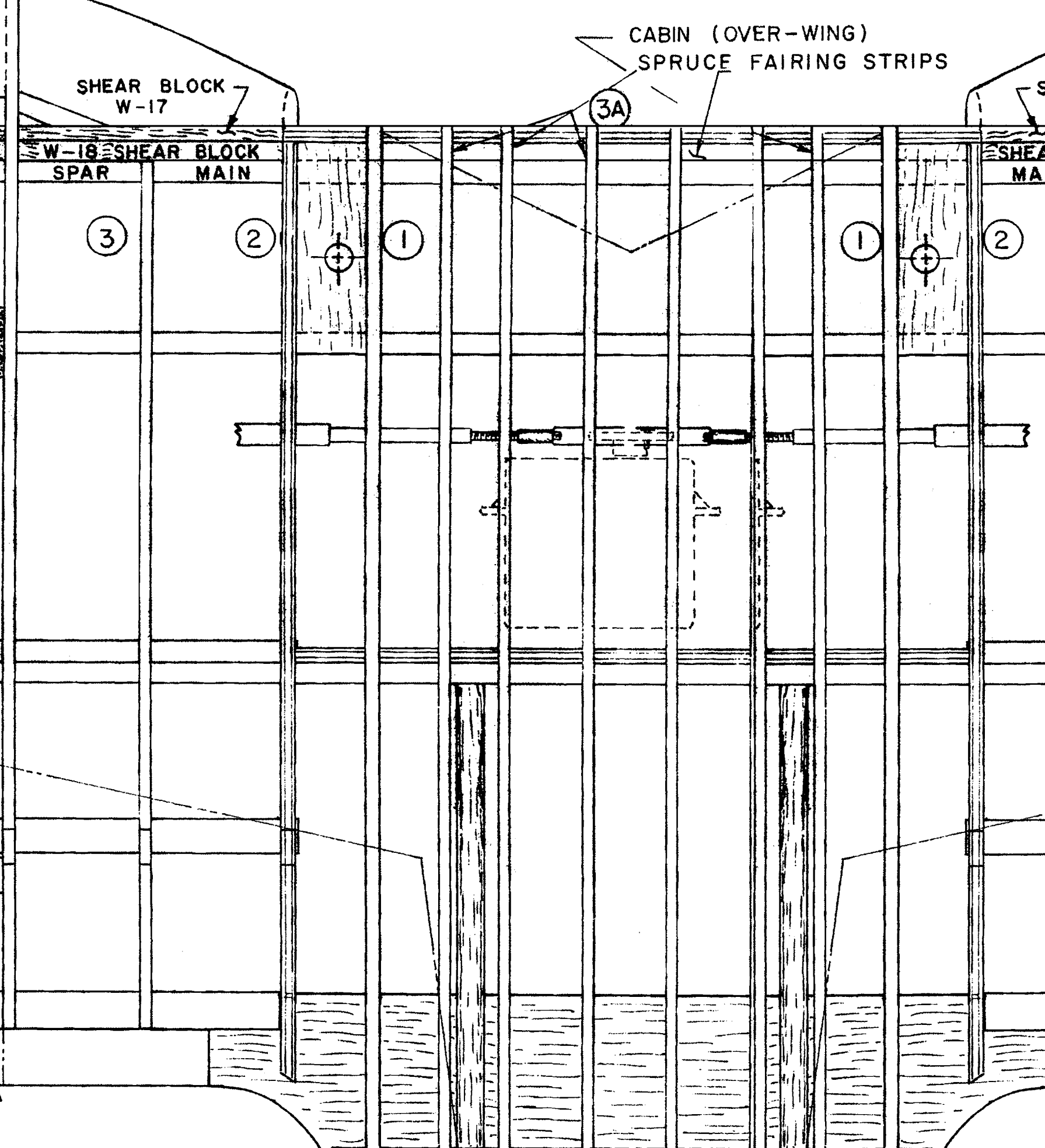
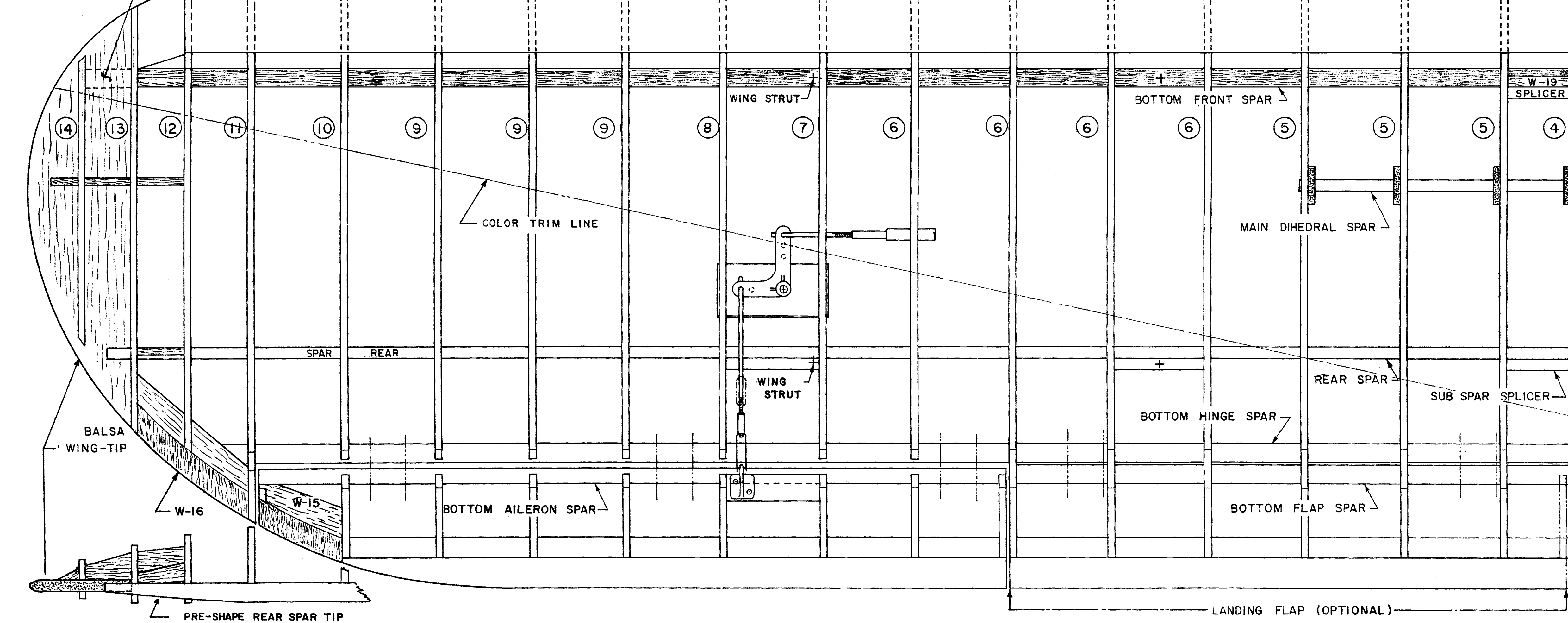




"SIX-QUARTER" SCALE CLASSIC  
**STINSON RELIANT**  
**SR-6**  
WINGSPAN 62" LENGTH 41" ENGINE .35-.61



1" x 5/32" x 5/16" STRIP

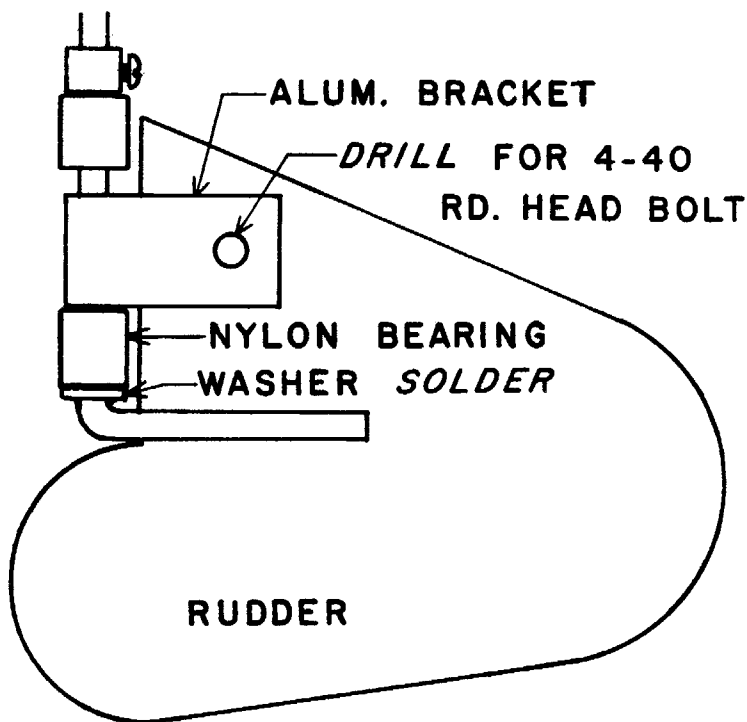


1" x 5/32" x 5/16" STRIP









*Steerable water rudders take a severe beating--especially on landing. Tests on a special high-powered model brought about this major improvement for much greater strength in the mounting system.*

*One pair of drilled aluminum brackets with flanges compressed together and 4-40 bolts and nuts are provided.*

*The illustration shows these in place.*

*"Open" the flanges,--slip them over the actuating rod and rudder with the rudder turned to the side for ease of attachment. Drill through rudder (7/64" hole) with the round end of bracket up against the rod. Bolt together and epoxy brackets, bolts/nuts.*